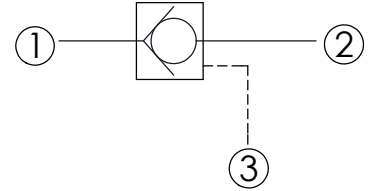
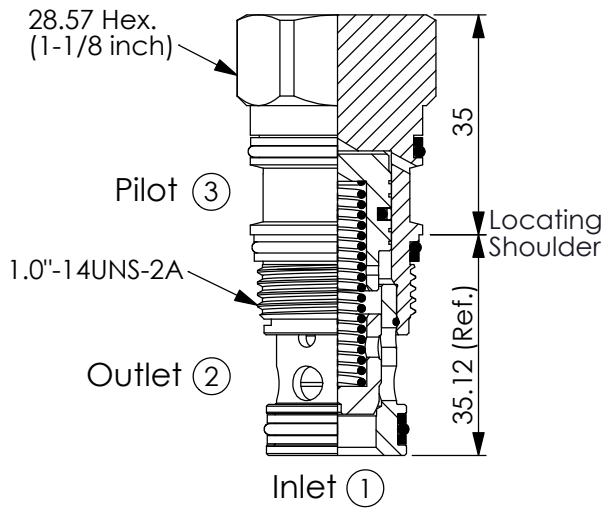


Ordering Code: **CC-2A-X-Y-Z**

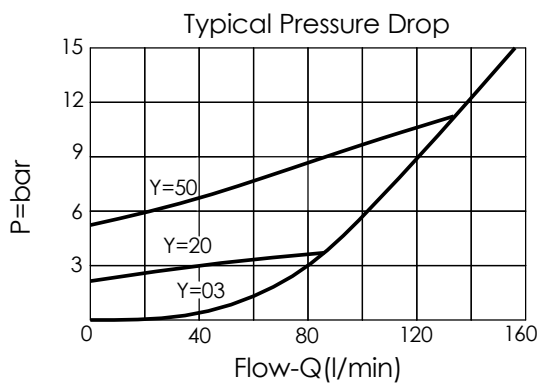


TECHNICAL DATA

Max. pressure:	350	bar
Rated flow:	160	l/min
Cavity-Tooling:	2A-3	
Installation torque:	60 - 70	Nm
Weight:	0.23 (Z=N)	kg

UNIT:mm

Illustrations / detail are for reference only.
Data subject to change.



X

OPERATION

30

① to ② (Free Flow)
(with sealed pilot)
Pilot Ratio 1.8:1

Y

SPRINGS

Cracking pressure

03	0.3 bar
10	1.0 bar
20	2.0 bar
50	5.0 bar
70	7.0 bar
100	10.0 bar

Z

OPTION

N

Non-adjustable