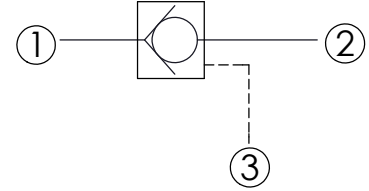
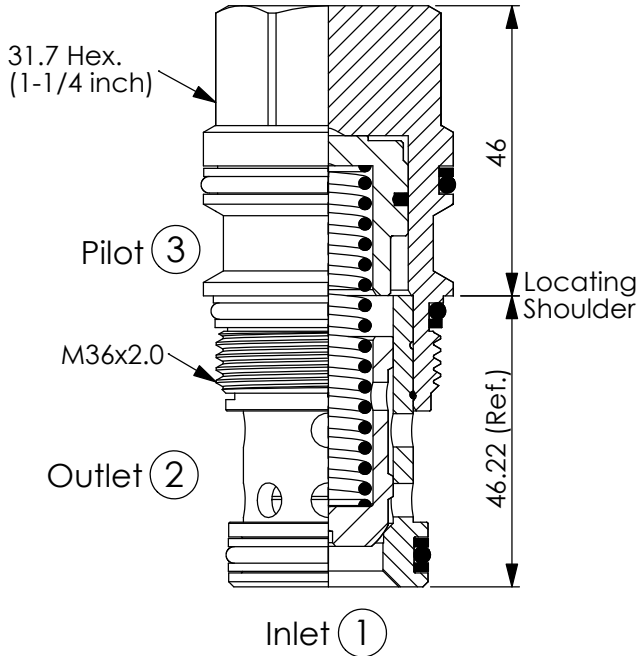


Ordering Code: **CC-17A-X-Y-Z**



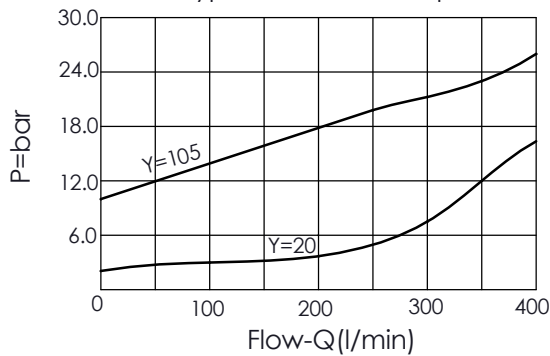
TECHNICAL DATA

Max. Operating pressure:	350	bar
Rated flow:	320	l/min
Cavity-Tooling:	17A-3	
Installation torque:	200 - 215	Nm
Weight:	0.51	kg

UNIT:mm

Illustrations / detail are for reference only. Data subject to change.

Typical Pressure Drop



X OPERATION

30 ① to ② (Free Flow)
(with sealed pilot)
Pilot Ratio 1.8:1

Y

SPRINGS

Cracking pressure

03	0.3 bar
20	2.0 bar
50	5.0 bar
70	7.0 bar
105	10.5 bar

Z OPTION

N	Non-adjustable
NP	Non-adjustable With stainless steel external metal components (Buna-N Seal)