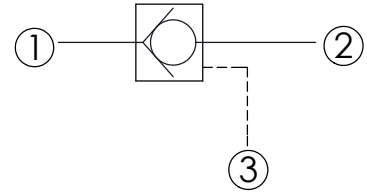
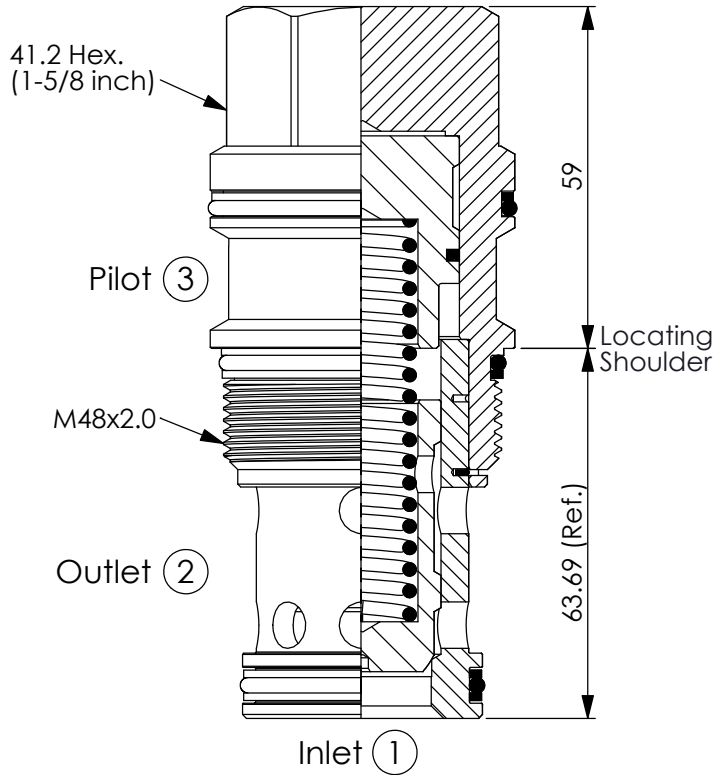


Ordering Code: **CC-19A-X-Y-Z**

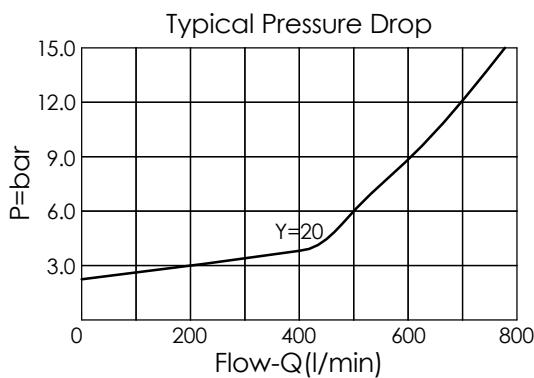


### TECHNICAL DATA

Max. pressure:	350	bar
Rated flow:	640	l/min
Cavity-Tooling:	19A-3 (19AB-3)	
Installation torque:	465 - 500	Nm
Weight:	1.15	kg

UNIT:mm

Illustrations / detail are for reference only. Data subject to change.



**X**

### OPERATION

**30**

① to ② (Free Flow)  
(with sealed pilot)  
Pilot Ratio 1.8:1

**Y**

### SPRINGS

Cracking pressure

**03**

0.3 bar

**20**

2.0 bar

**50**

5.0 bar

**70**

7.0 bar

**105**

10.5 bar

**Z**

### OPTION

**N**

Non-adjustable