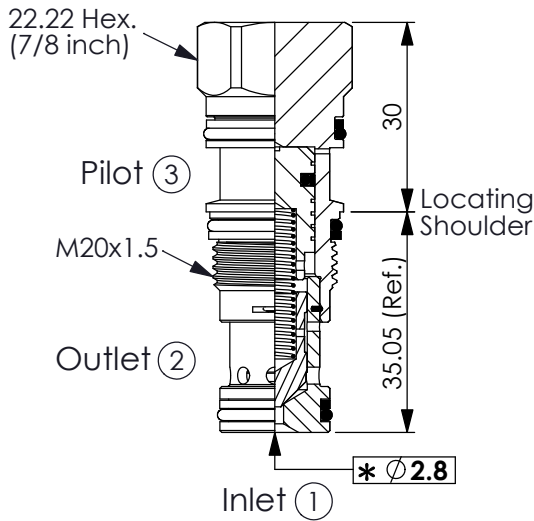
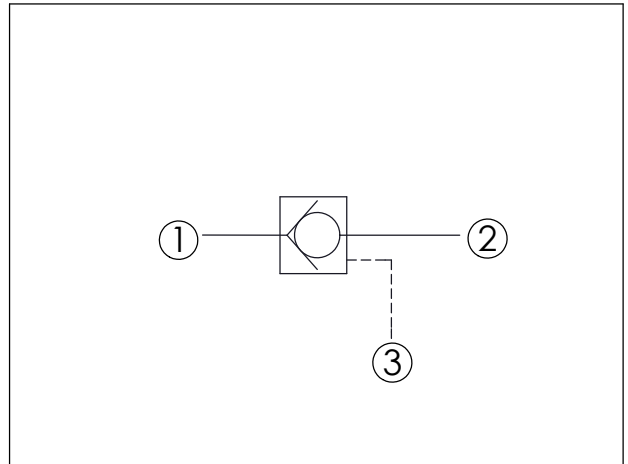


Ordering Code: **CC-11A-X-Y-Z**



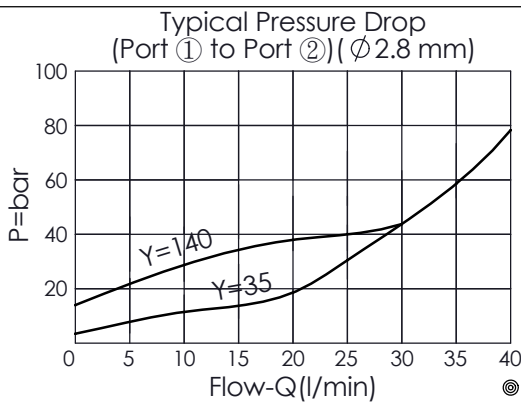
UNIT:mm

Illustrations / detail are for reference only. Data subject to change.



### TECHNICAL DATA

Max. pressure:	350	bar
Capacity:	Ø 2.8	mm
Cavity-Tooling:	11A-3	
Installation torque:	40 - 50	Nm
Weight:	0.129	kg



### X OPERATION

**3T** ① to ② (Free Flow)  
(with sealed pilot)  
Pilot Ratio 20 : 1

· Maximum Leakage Approximately  
(0.07 cc/min./70 bar)

**Y**

### SPRINGS

Cracking pressure

**35**

3.5 bar

**140**

14.0 bar

**Z**

### OPTION

**N**

Non-adjustable