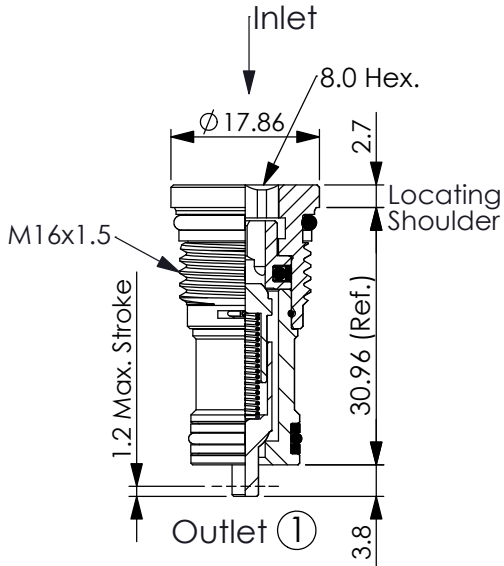
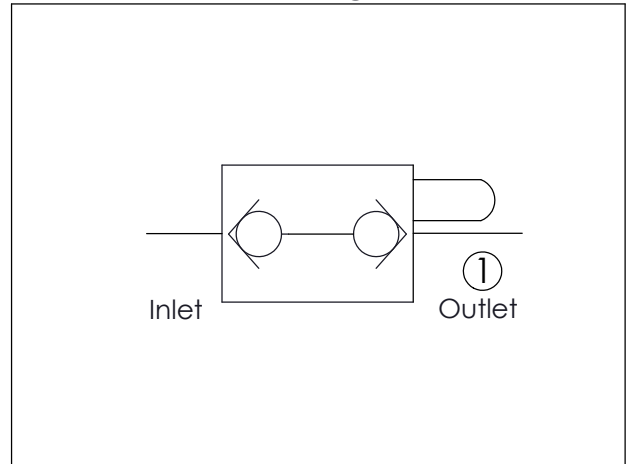


Ordering Code: **CD-162AP-X-Y-Z**



UNIT:mm

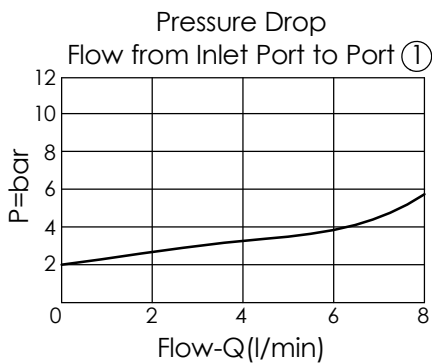
Illustrations / detail are for reference only. Data subject to change.



TECHNICAL DATA

Max. operating pressure:	350	bar
Rated flow:	4.7	l/min
Cavity-Tooling:	162AP-2	
Installation torque:	27 - 33	Nm
Weight:	0.03	kg

- Internal Leakage Approximately (0.07 cc/min./350 bar) (1 drop/min)
- Maximum stroke of the poppet must be limited to 1.2 mm by a mechanical stop other than the valve itself.
- Any technical questions, please feel free to consult with our sales dept.



X	CONTROL	
2S	Phaser Check - Single End Actuation	

Y	SPRINGS	
	Cracking pressure	
20	2.0 bar	

Z	OPTION	
M	Standard	