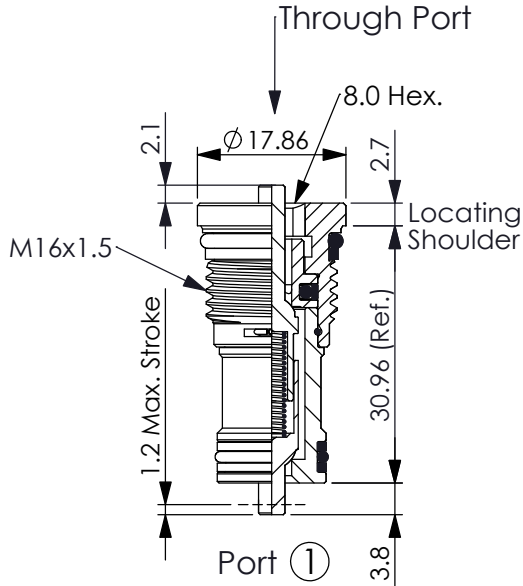
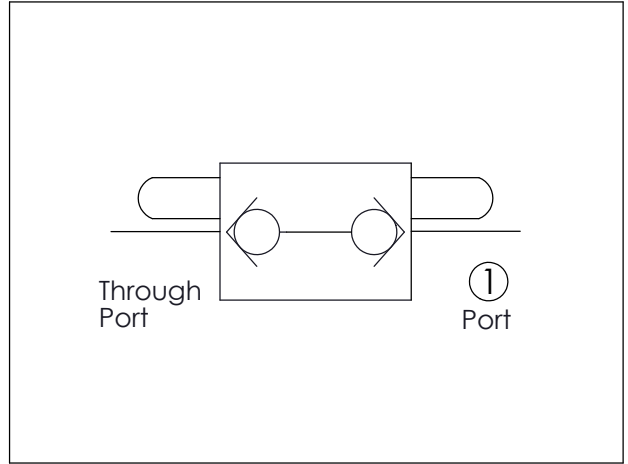


Ordering Code: **CD-162AP-X-Y-Z**



UNIT:mm

Illustrations / detail are for reference only. Data subject to change.



### TECHNICAL DATA

Max. operating pressure: 350 bar

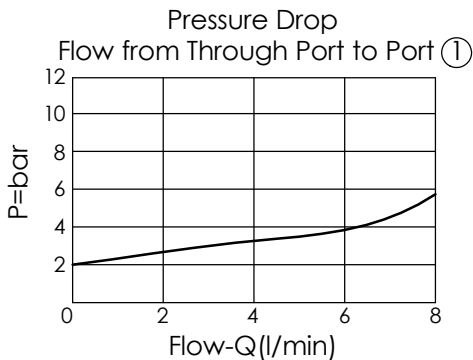
Rated flow: 4.7 l/min

Cavity-Tooling: 162AP-2

Installation torque: 27 - 33 Nm

Weight: 0.03 kg

- Internal Leakage Approximately (0.07 cc/min./350 bar) (1 drop/min)
- Maximum stroke of the poppet must be limited to 1.2 mm by a mechanical stop other than the valve itself.
- Any technical questions, please feel free to consult with our sales dept.

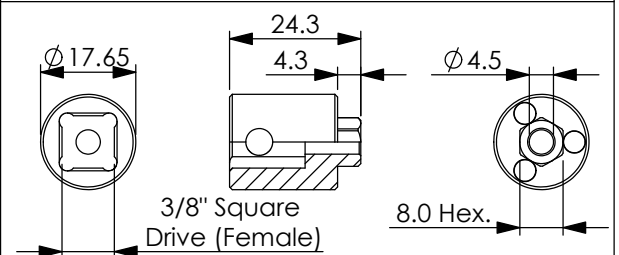


<b>X</b>	<b>CONTROL</b>	
<b>2D</b>	Phaser Check- Double End Actuation	

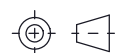
<b>Z</b>	<b>OPTION</b>	
<b>M</b>	Standard	

<b>Y</b>	<b>SPRINGS</b>	
	Cracking pressure	
<b>20</b>	2.0 bar	

### FITTING TOOL DIMENSION



UNIT:mm



Illustrations / detail are for reference only. Data subject to change.

Tool's order code: **7ZW1724001**