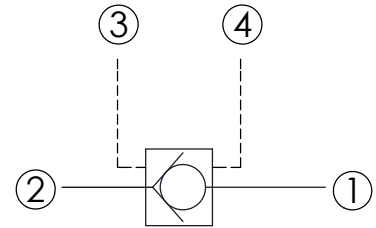
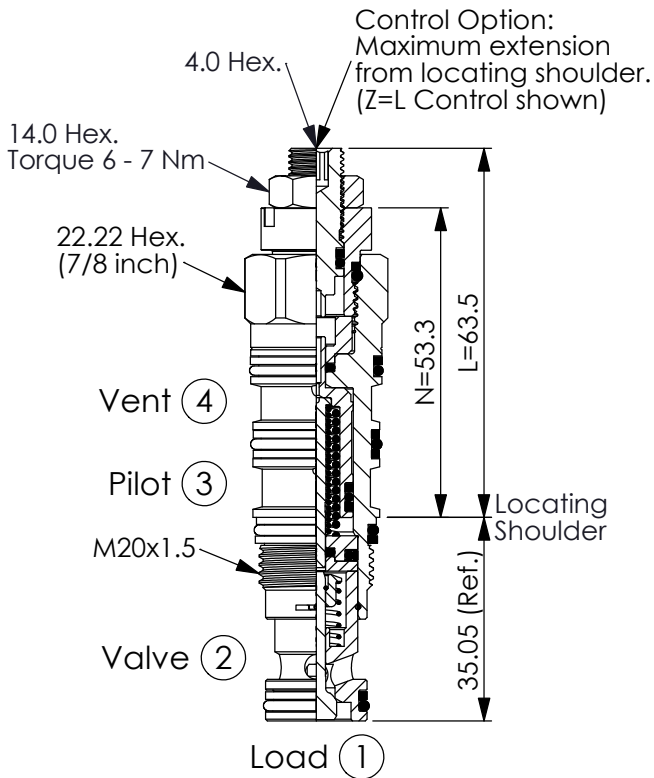


Ordering Code: **CK-21A-X-Y-Z**



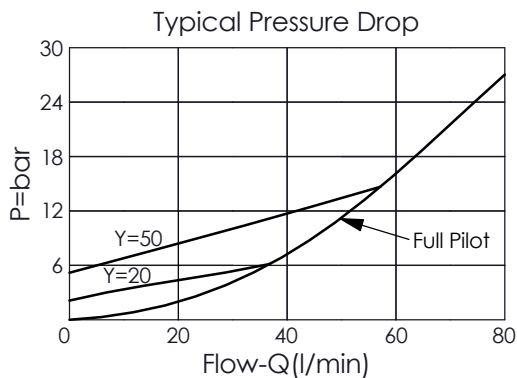
TECHNICAL DATA

Max. Operating pressure:	350 bar	
Rated flow:	60	l/min
Cavity-Tooling:	21A-4	
Installation torque:	40 - 50	Nm
Weight:	0.17 (Z=N)	kg
	0.18 (Z=L)	

- Maximum Leakage Approximately (0.07 cc/min.)
- Approximately 1 drop (0.07 cc) of fluid will pass from the pilot area to the vented spring chamber every 4000 cycles.

UNIT:mm

Illustrations / detail are for reference only. Data subject to change.



X OPERATION

4C ② to ① (Free Flow)
Sealed Pilot Piston
Pilot Ratio 3:1

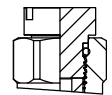
Y SPRINGS

Cracking pressure

03	0.3 bar
10	1.0 bar
20	2.0 bar
35	3.5 bar
50	5.0 bar
70	7.0 bar

Z OPTION

N Non-adjustable



L Leakproof hex. socket screw.

