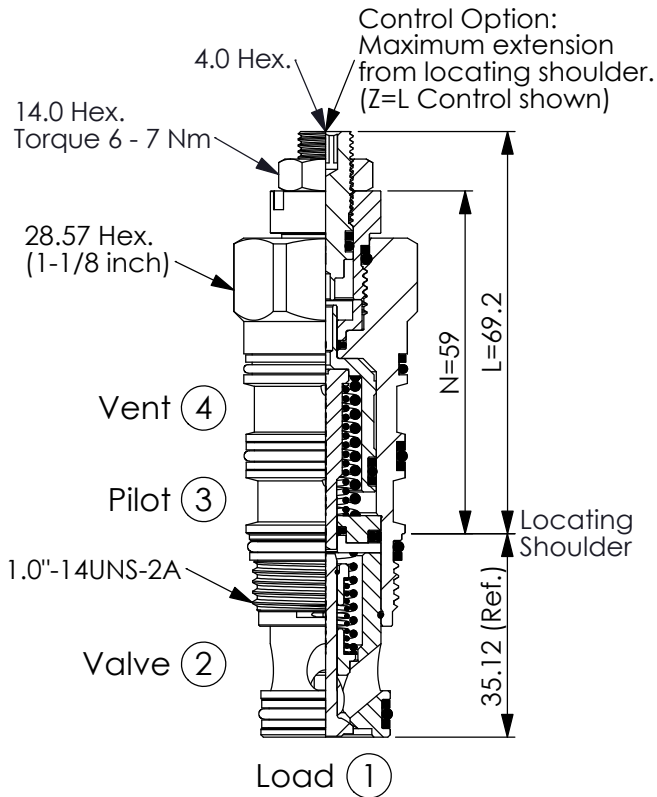
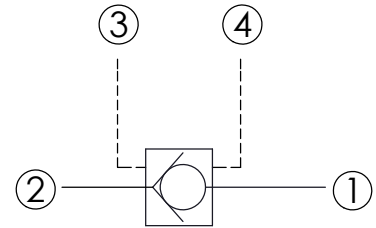


Ordering Code: **CK-22A-X-Y-Z**



UNIT:mm

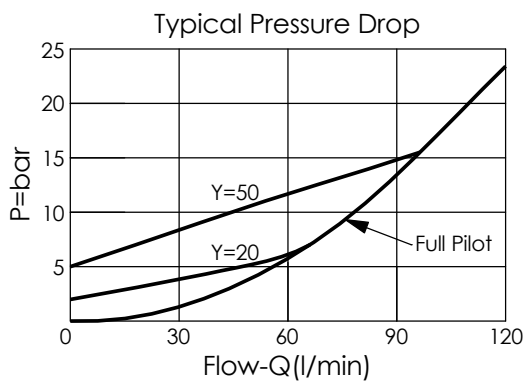
Illustrations / detail are for reference only. Data subject to change.



### TECHNICAL DATA

Max. Operating pressure:	350 bar
Rated flow:	120 l/min
Cavity-Tooling:	22A-4
Installation torque:	60 - 70 Nm
Weight:	0.30 (Z=N,L) kg

- Maximum Leakage Approximately (0.07 cc/min.)
- Approximately 1 drop (0.07 cc) of fluid will pass from the pilot area to the vented spring chamber every 4000 cycles.



### X OPERATION

**4C** ② to ① (Free Flow)  
Sealed Pilot Piston  
Pilot Ratio 3:1

### Y

### SPRINGS

Cracking pressure

<b>03</b>	0.3 bar
<b>10</b>	1.0 bar
<b>20</b>	2.0 bar
<b>35</b>	3.5 bar
<b>50</b>	5.0 bar
<b>70</b>	7.0 bar

### Z OPTION

<b>N</b>	Non-adjustable	
<b>NP</b>	Non-adjustable With stainless steel external metal components (Buna-N Seal)	
<b>L</b>	Leakproof hex. socket screw.	