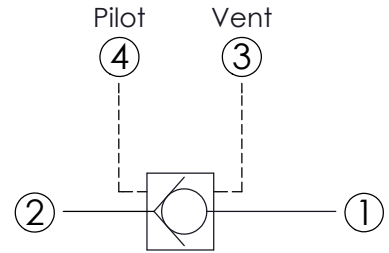
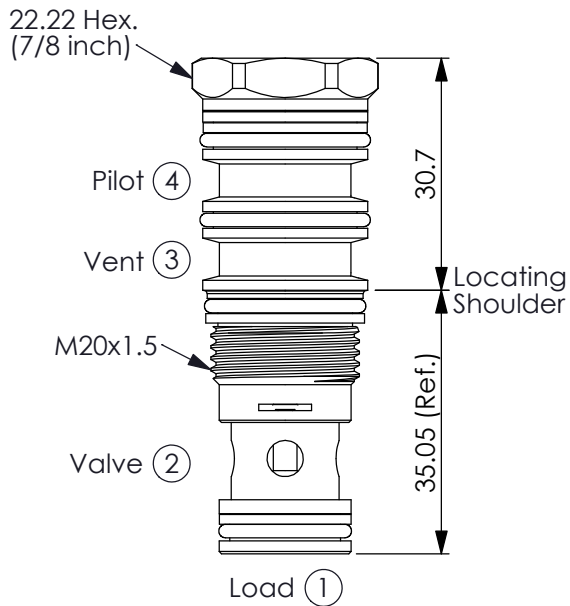


Ordering Code: **CK-21AS-X-Y-Z**

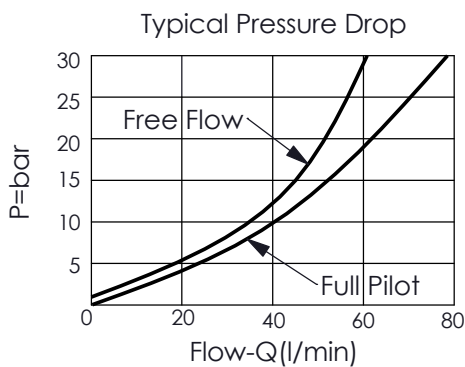


TECHNICAL DATA

Max. pressure:	350	bar
Rated flow:	60	l/min
Cavity-Tooling:	21AS-4	
Installation torque:	40-50	Nm
Weight:	0.13	kg

- Maximum Leakage Approximately (0.07 cc/min.)
- Approximately 1 drop (0.07 cc) of fluid will pass from the pilot area to the vented spring chamber every 4000 cycles.

UNIT:mm



X OPERATION

40 ② to ① (Free Flow)
Pilot Ratio 3:1

Y SPRINGS

Cracking pressure

10 1.0 bar

Z OPTION

N Non-adjustable