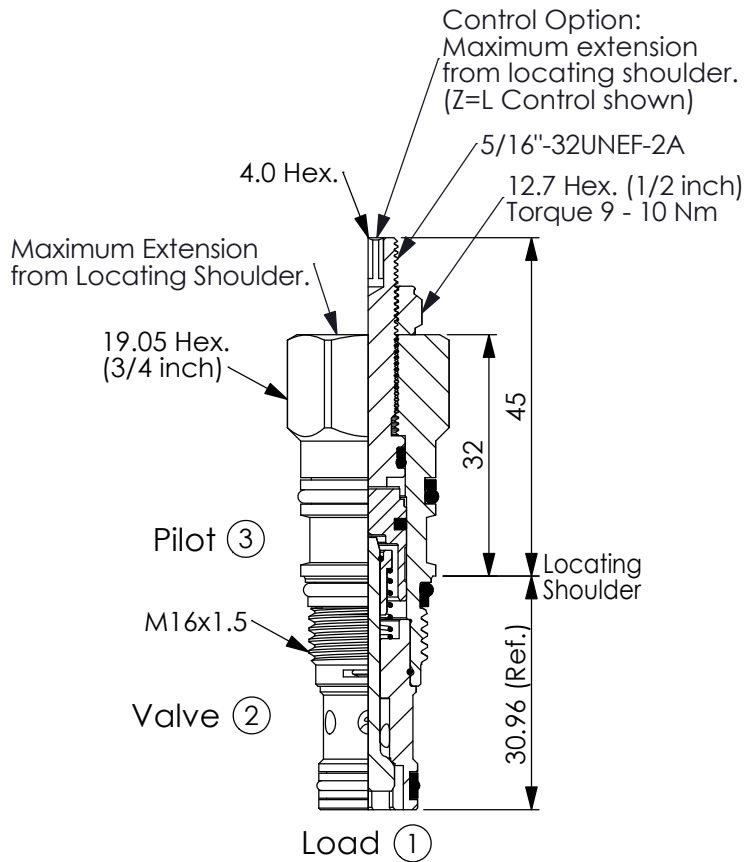
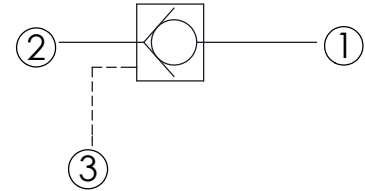


Ordering Code: **CO-163A-X-Y-Z**



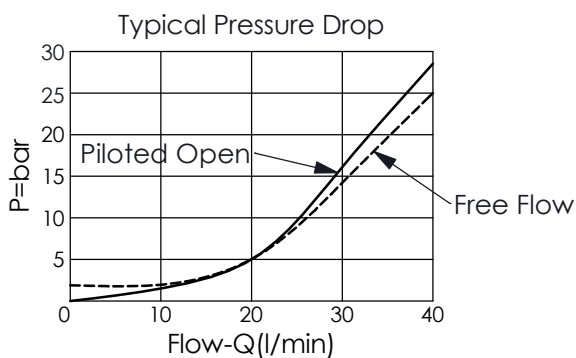
UNIT:mm

Illustrations / detail are
for reference only.
Data subject to change.



TECHNICAL DATA

| | | |
|--------------------------|-----------------------|-------|
| Max. Operating pressure: | 350 | bar |
| Rated flow: | 30 | l/min |
| Cavity-Tooling: | 163A-3 | |
| Installation torque: | 27 - 33 | Nm |
| Weight: | 0.09 (Z=N) 0.10 (Z=L) | kg |



X OPERATION

| | |
|-----------|--|
| 30 | ② to ① (Free Flow) Pilot Ratio 3:1 |
| 3C | ② to ① (Free Flow) Sealed Pilot Piston Pilot Ratio 3:1 |
| 3D | ② to ① (Free Flow) Sealed Pilot Piston Pilot Ratio 4:1 |

Y SPRINGS

Cracking pressure

| | |
|-----------|---------|
| 20 | 2.0 bar |
| 35 | 3.5 bar |
| 50 | 5.0 bar |

Z OPTION

| | | |
|-----------|--|--|
| N | Non-adjustable | |
| NP | Non-adjustable With stainless steel external metal components (Buna-N Seal) | |
| L | Leakproof hex. socket screw. | |