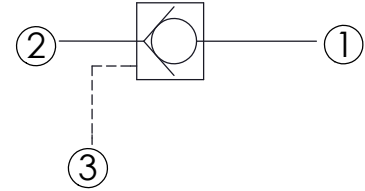
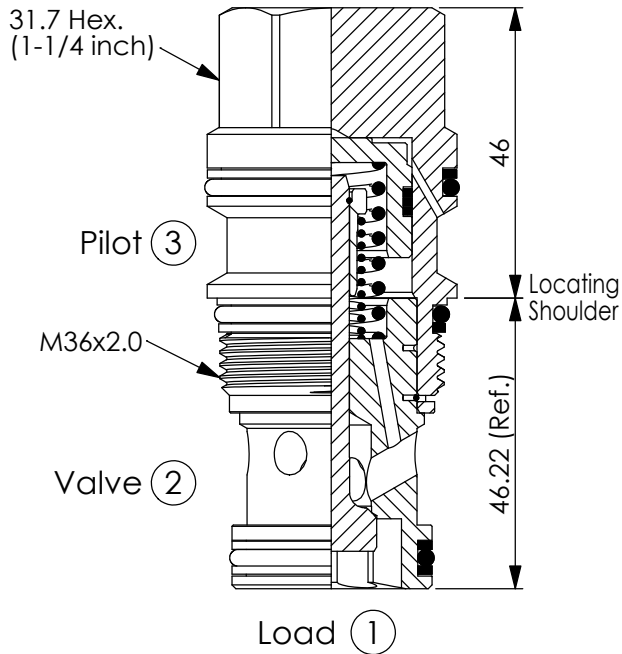


Ordering Code: **CO-17A-X-Y-Z**



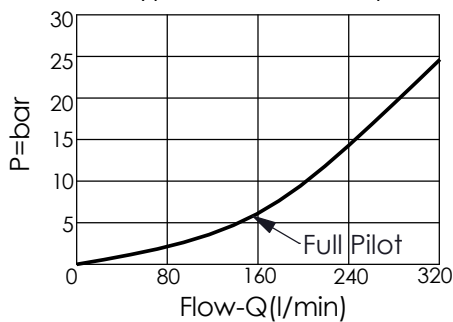
### TECHNICAL DATA

Max. Operating pressure:	350	bar
Rated flow:	240	l/min
Cavity-Tooling:	17A-3	
Installation torque:	200 - 215	Nm
Weight:	0.52	kg

UNIT:mm

Illustrations / detail are for reference only. Data subject to change.

Typical Pressure Drop



### X OPERATION

<b>30</b>	② to ① (Free Flow) Pilot Ratio 3:1
<b>3C</b>	② to ① (Free Flow) Sealed Pilot Piston Pilot Ratio 3:1

### Y

### SPRINGS

Cracking pressure

<b>015</b>	0.15 bar
<b>03</b>	0.3 bar
<b>10</b>	1.0 bar
<b>20</b>	2.0 bar
<b>35</b>	3.5 bar
<b>50</b>	5.0 bar
<b>70</b>	7.0 bar

### Z

### OPTION

<b>N</b>	Non-adjustable
<b>NP</b>	Non-adjustable With stainless steel external metal components (Buna-N Seal)