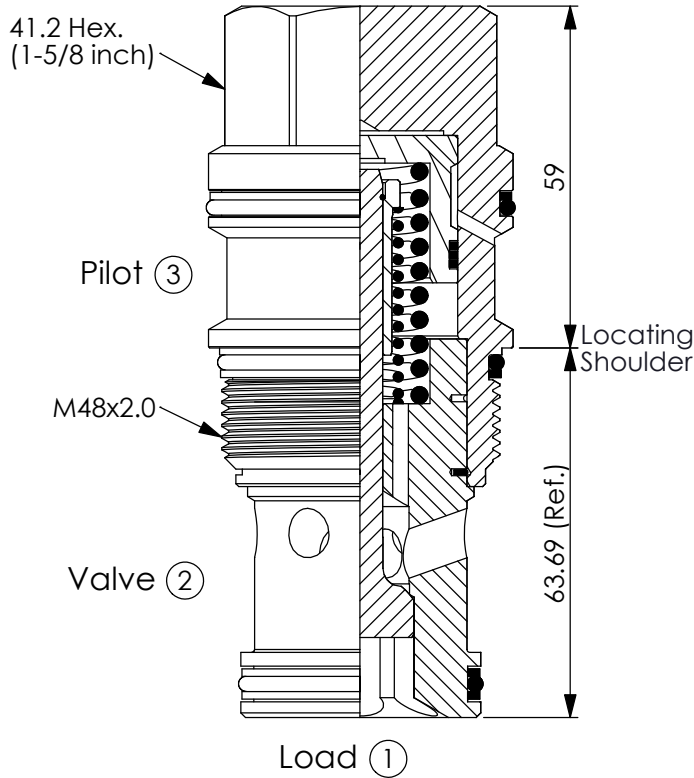
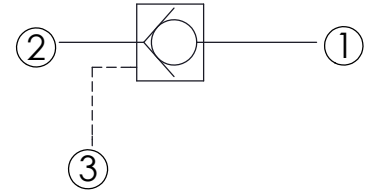


Ordering Code: **CO-19A-X-Y-Z**



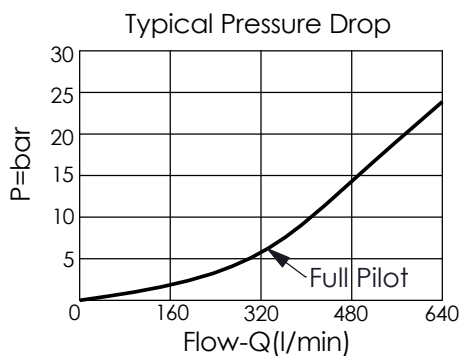
UNIT:mm

Illustrations / detail are for reference only. Data subject to change.



TECHNICAL DATA

Max. Operating pressure:	350 bar
Rated flow:	480 l/min
Cavity-Tooling:	19A-3 (19AB-3)
Installation torque:	465 - 500 Nm
Weight:	1.185 (Z=N) kg



X OPERATION

30	② to ① (Free Flow) Pilot Ratio 3:1
3C	② to ① (Free Flow) Sealed Pilot Piston Pilot Ratio 3:1

Y

SPRINGS

Cracking pressure

015	0.15 bar
03	0.3 bar
10	1.0 bar
20	2.0 bar
35	3.5 bar
50	5.0 bar
70	7.0 bar

Z

OPTION

N	Non-adjustable
NP	Non-adjustable With stainless steel external metal components (Buna-N Seal)