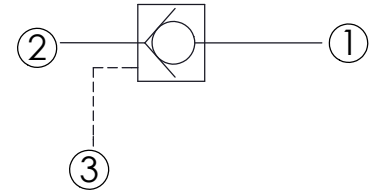
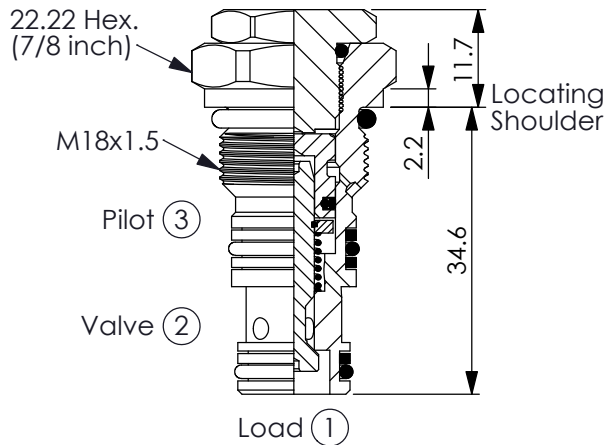


Ordering Code: **CO-18MS-X-Y-Z**



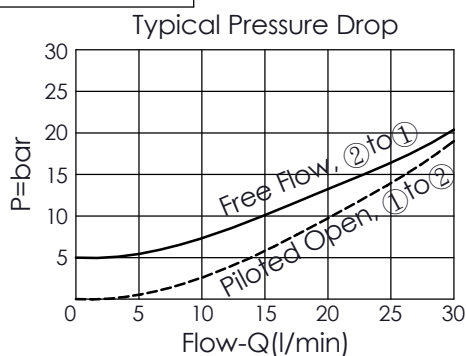
TECHNICAL DATA

Max. inlet pressure:	420	bar
Rated flow:	30	l/min (Refer to performance chart)
Cavity-Tooling:	18MS-3	
Installation torque:	35-45	Nm
Weight:	0.07	kg

· Maximum Leakage Approximately (3 drops/min.)

UNIT:mm

Performance Chart



X OPERATION

3D	Standard Type ② to ① (Free Flow) Sealed Pilot Piston Pilot Ratio 4:1
34	Option Type ② to ① (Free Flow) Pilot Ratio 4:1

Y

SPRINGS

Cracking pressure

50

5.0 bar

Z

OPTION

N

Non-adjustable