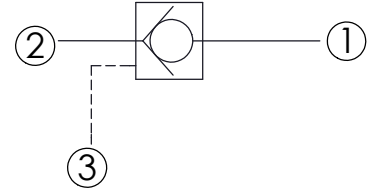
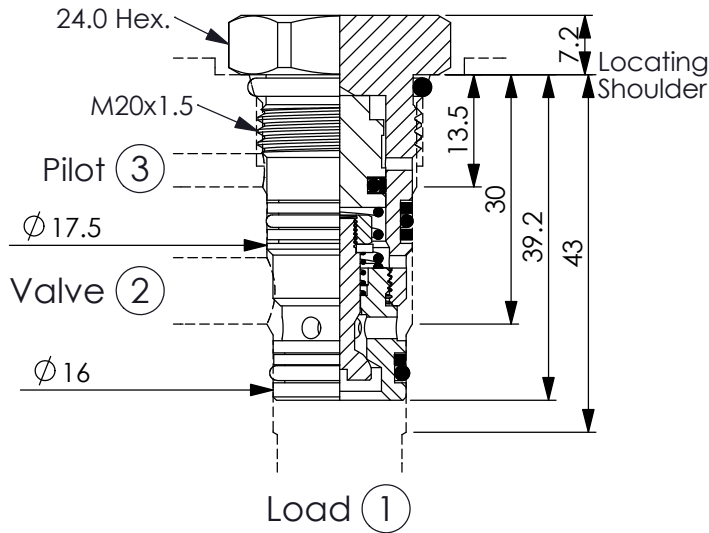


Ordering Code: **CO-20MS-X-Y-Z**



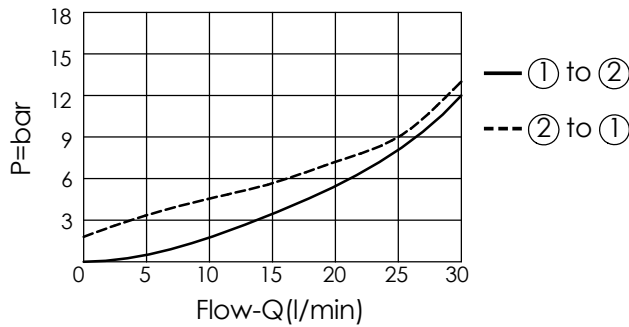
### TECHNICAL DATA

Max. pressure:	350	bar
Rated flow:	30	l/min
Cavity-Tooling:	20MS-3	
Installation torque:	40 - 50	Nm
Weight:	0.081	kg

UNIT:mm

Illustrations / detail are for reference only. Data subject to change.

Typical Pressure Drop



**X**

### OPERATION

**3C**

② to ① (Free Flow)  
Sealed Pilot Piston  
Pilot Ratio 3:1

**Y**

### SPRINGS

Cracking pressure

**20**

2.0 bar

**Z**

### OPTION

**N**

Non-adjustable