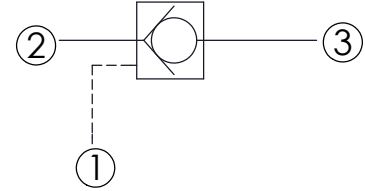
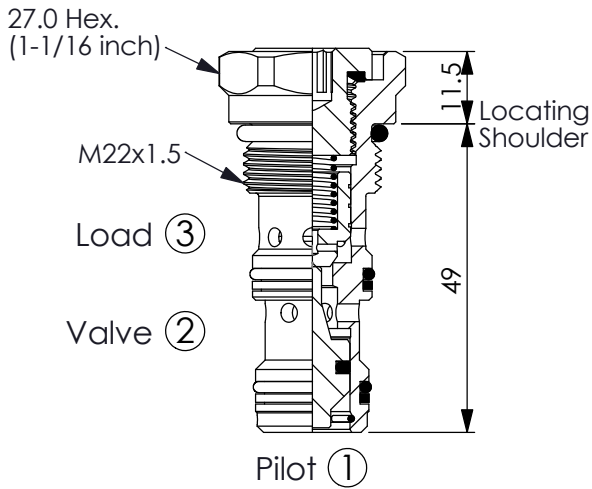


Ordering Code: **CO-22M-X-Y-Z**

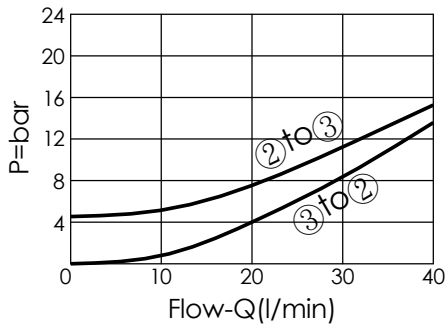


TECHNICAL DATA

Max. pressure:	315	bar
Rated flow:	30	l/min
Cavity-Tooling:	22M-3	
Installation torque:	44 - 50	Nm
Weight:	0.12	kg

UNIT:mm

Typical Pressure Drop



X OPERATION

3C ② to ③ (Free Flow)
Sealed Pilot Piston
Pilot Ratio 3.4 : 1

Y

SPRINGS

Cracking pressure

50	5.0 bar
70	7.0 bar
100	10.0 bar
200	20.0 bar

Z

OPTION

N

Non-adjustable