

Ordering Code: **CO-27M-X-Y-Z**

32.0 Hex.

M27x1.5

Pilot ③

Valve ②

Load ①

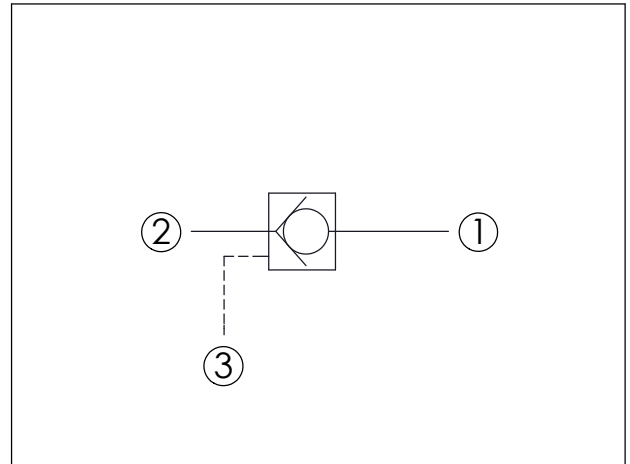
18.3

2.0

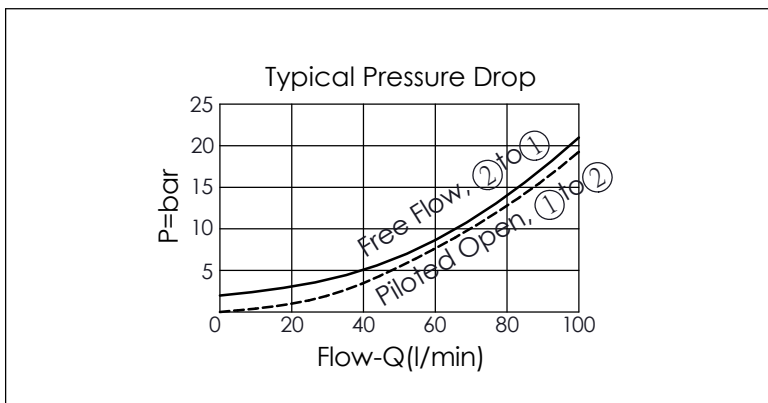
50.6

Locating Shoulder

UNIT:mm



TECHNICAL DATA		
Max. pressure:	350	bar
Rated flow:	90	l/min
Cavity-Tooling:	27M-3	
Installation torque:	50-60	Nm
Weight:	0.239	kg



X	OPERATION	
3C	② to ① (Free Flow) Sealed Pilot Piston Pilot Ratio 3 : 1	

Y	SPRINGS	
	Cracking pressure	
20	2.0 bar	

Z	OPTION	
N	Non-adjustable	