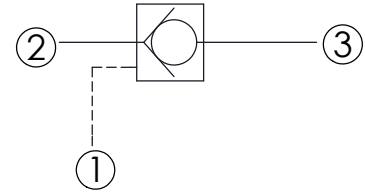
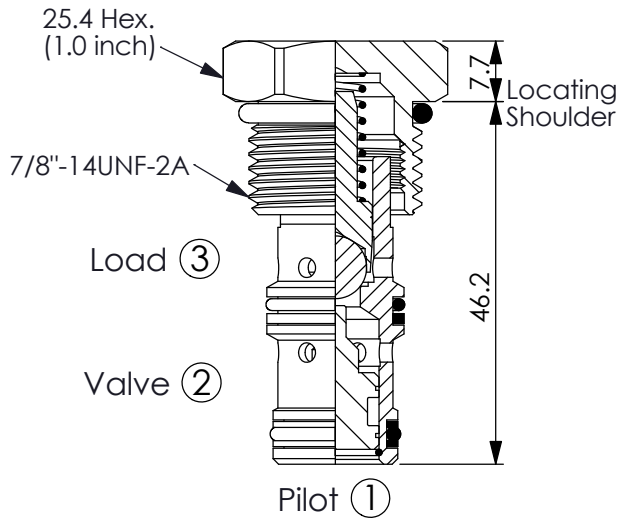


Ordering Code: **CO-10W-X-Y-Z**

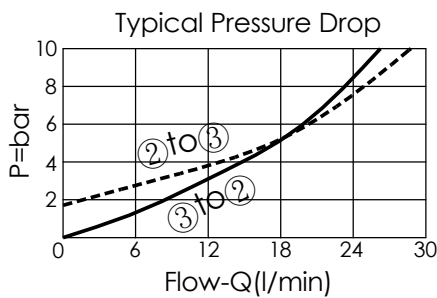


### TECHNICAL DATA

Max. pressure:	240	bar
Rated flow:	30	l/min
Cavity-Tooling:	10W-3	
Installation torque:	35 - 45	Nm
Weight:	0.09	kg

UNIT:mm

Illustrations / detail are for reference only. Data subject to change.



### X OPERATION

<b>30</b>	② to ③ (Free Flow) Pilot Ratio 3:1
<b>3C</b>	② to ③ (Free Flow) Sealed Pilot Piston Pilot Ratio 3:1 (Check Spring Bias) (Min. 2.0 bar)

**Y**

### SPRINGS

Cracking pressure

<b>10</b>	1.0 bar
<b>20</b>	2.0 bar
<b>50</b>	5.0 bar
<b>62</b>	6.2 bar

**Z**

### OPTION

**N**

Non-adjustable