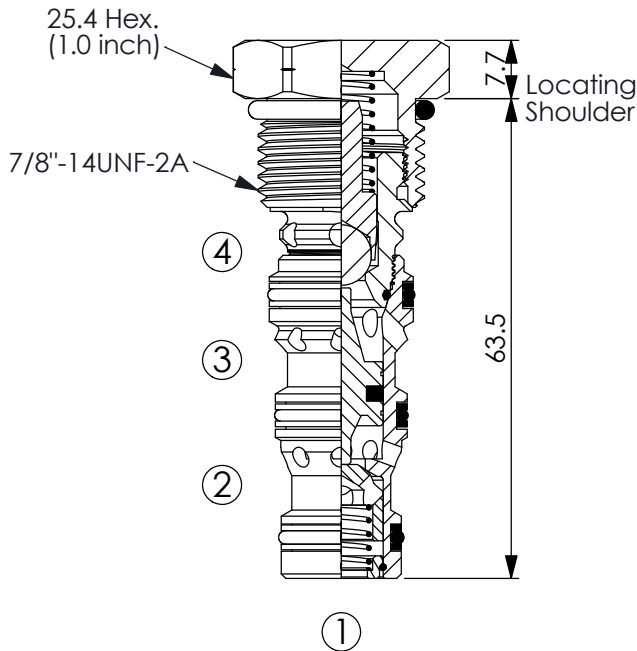
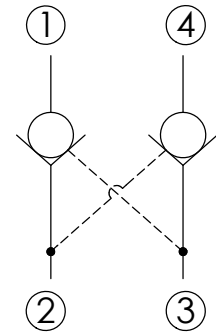


Ordering Code: **CO-10W-X-Y-Z**



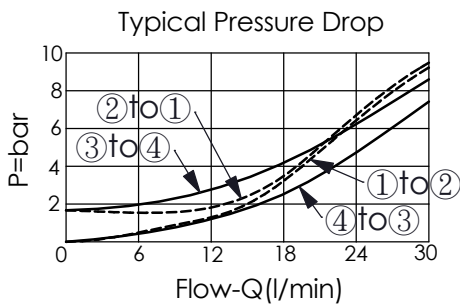
UNIT:mm

Illustrations / detail are for reference only. Data subject to change.



### TECHNICAL DATA

Max. pressure:	240	bar
Rated flow:	30	l/min
(Refer To Performance Chart)		
Cavity-Tooling:	10W-4	
Installation torque:	35 - 45	Nm
Weight:	0.11	kg
· Maximum Leakage Approximately (5 drops/min./70 bar)		



### X OPERATION

**43** Pilot Ratio 3:1

**Y**

### SPRINGS

Cracking pressure

**17**

1.7 bar

**Z**

### OPTION

**N**

Non-adjustable