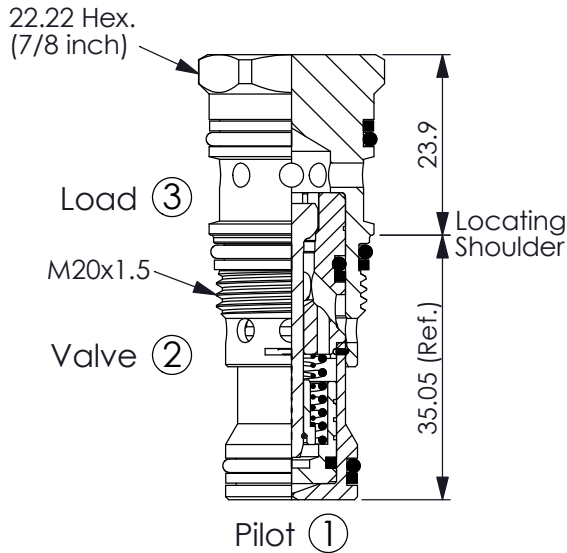
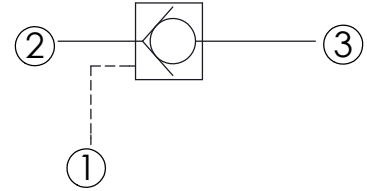


Ordering Code: **CO-11A-X-Y-Z**



UNIT:mm

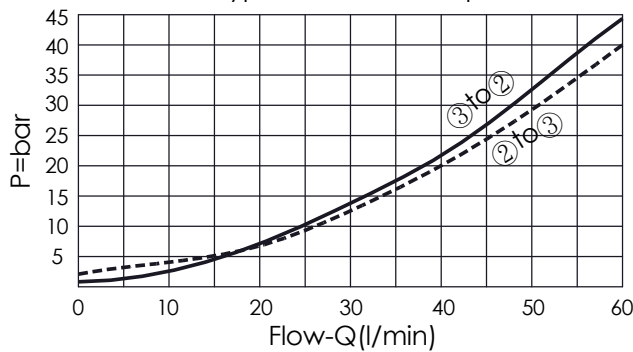
Illustrations / detail are for reference only. Data subject to change.



TECHNICAL DATA

Max. pressure:	350	bar
Rated flow:	60	l/min
Cavity-Tooling:	11A-3	
Installation torque:	40 - 50	Nm
Weight:	0.13	kg

Typical Pressure Drop



X OPERATION

38 ② to ③ (Free Flow)
Sealed Pilot Piston
Pilot Ratio 3:1

Y

SPRINGS

Cracking pressure

10

1.0 bar

Z

OPTION

N

Non-adjustable

NP

Non-adjustable
With stainless steel
external metal components
(Buna-N Seal)