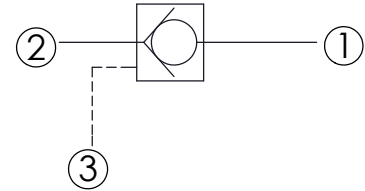
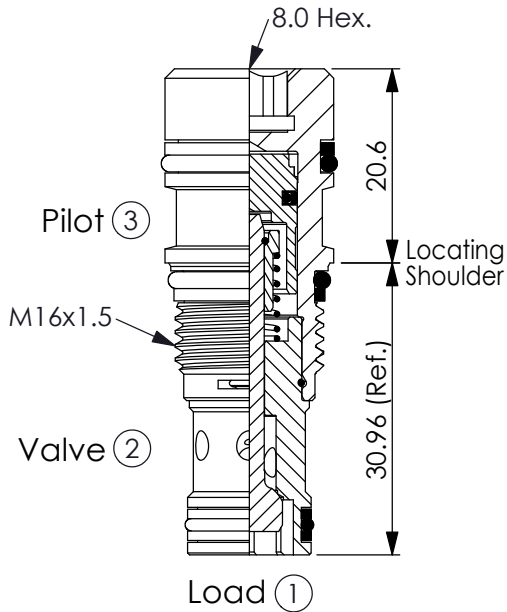


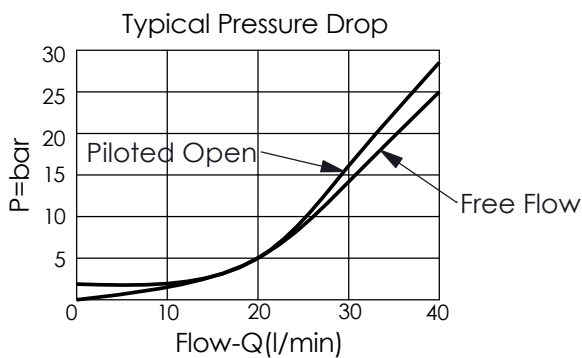
Ordering Code: **CO-163A-X-Y-Z**



TECHNICAL DATA

Max. Operating pressure:	350	bar
Rated flow:	30	l/min
Cavity-Tooling:	163A-3	
Installation torque:	27-33	Nm
Weight:	0.056 (Z=N8)	kg
	0.057 (Z=N8P)	

UNIT:mm



X OPERATION

30	② to ① (Free Flow) Pilot Ratio 3:1
3C	② to ① (Free Flow) Sealed Pilot Piston Pilot Ratio 3:1

Y SPRINGS

Cracking pressure

20	2.0 bar
35	3.5 bar
50	5.0 bar

Z OPTION

N8	Non-adjustable With Internal Hex. 8.0 mm	
N8P	Non-adjustable With Internal Hex. 8.0 mm With stainless steel external metal components (Buna-N Seal)	