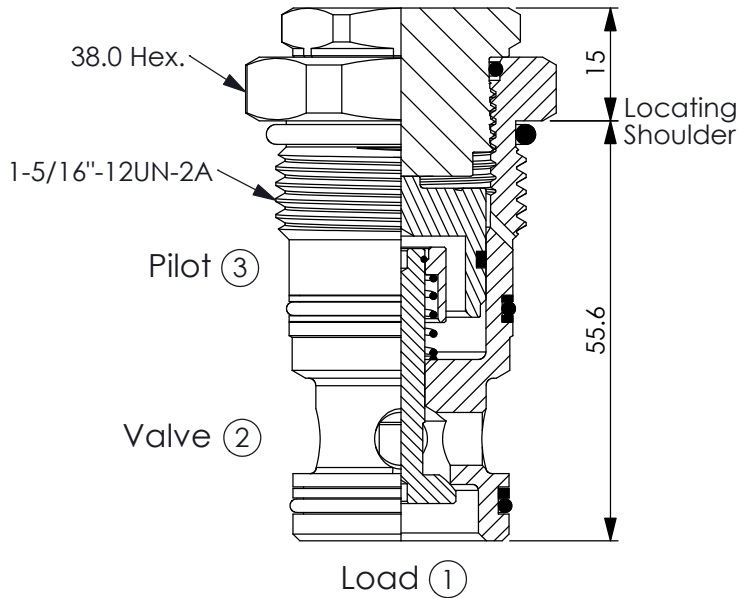
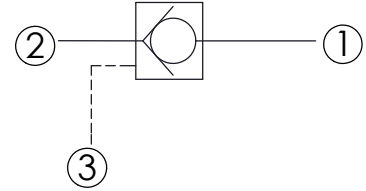


Ordering Code: **CO-16WC-X-Y-Z**



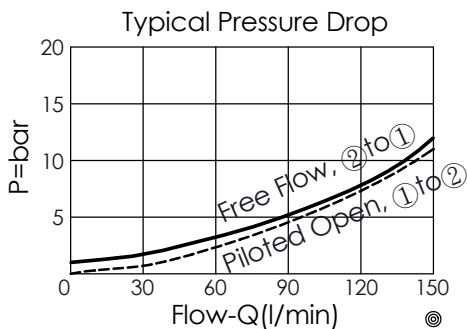
UNIT:mm

Illustrations / detail are for reference only. Data subject to change.



TECHNICAL DATA

Max. Operating pressure:	350	bar
Rated flow:	150	l/min
Cavity-Tooling:	16WC-3	
Installation torque:	100	Nm
Weight:	0.311	kg
· Maximum Leakage Approximately (5 drops/min.)		



X OPERATION

30 ② to ① (Free Flow)
Pilot Ratio 3:1

Y SPRINGS

Cracking pressure

10 1.0 bar

17 1.7 bar

Z OPTION

N Non-adjustable