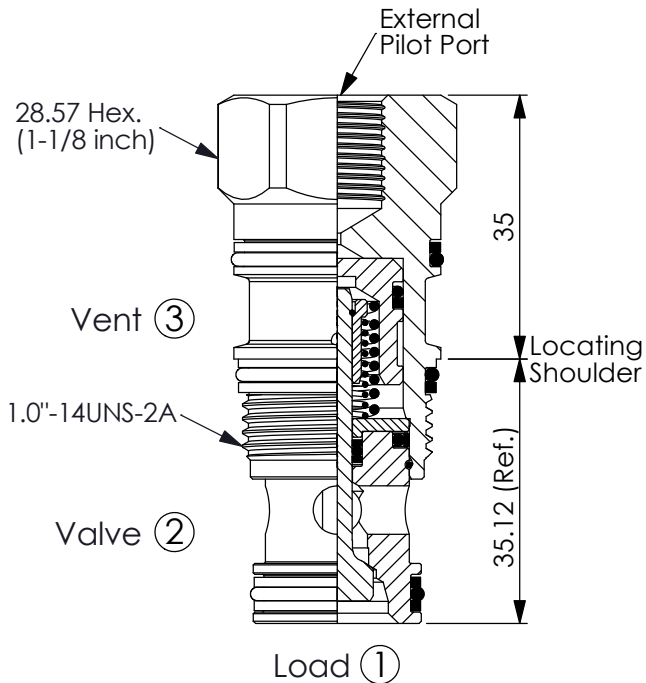
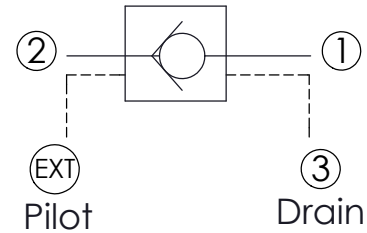


Ordering Code: **CO-2A-X-Y-Z**



UNIT:mm



TECHNICAL DATA

Max. Operating pressure: 350 bar

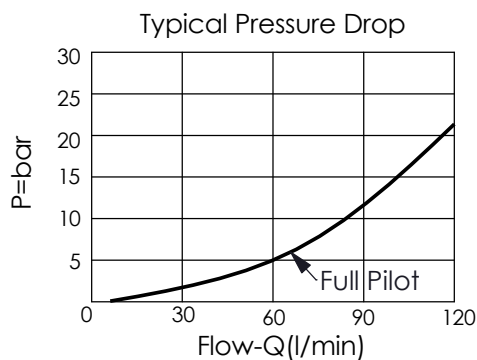
Rated flow: 120 l/min

Cavity-Tooling: 2A-3

Installation torque: 60 - 70 Nm

Weight: 0.25 kg

Note:
The structure of the valve is with proportional pressure reducing characteristic, hence, the pressure of port ① is approximate 75% of pressure of port ②. For example: when port ② is 200 bar, port ① is approximate 150 bar.



X OPERATION

3F ② to ① (Free Flow)
Sealed Pilot Piston
Pilot Ratio 3 : 1

Note:
Port ③ is drain port, please connect to tank.

Y

SPRINGS

Cracking pressure

20 2.0 bar

50 5.0 bar

70 7.0 bar

Z

OPTION (External Ports)

G02 G 1/4"