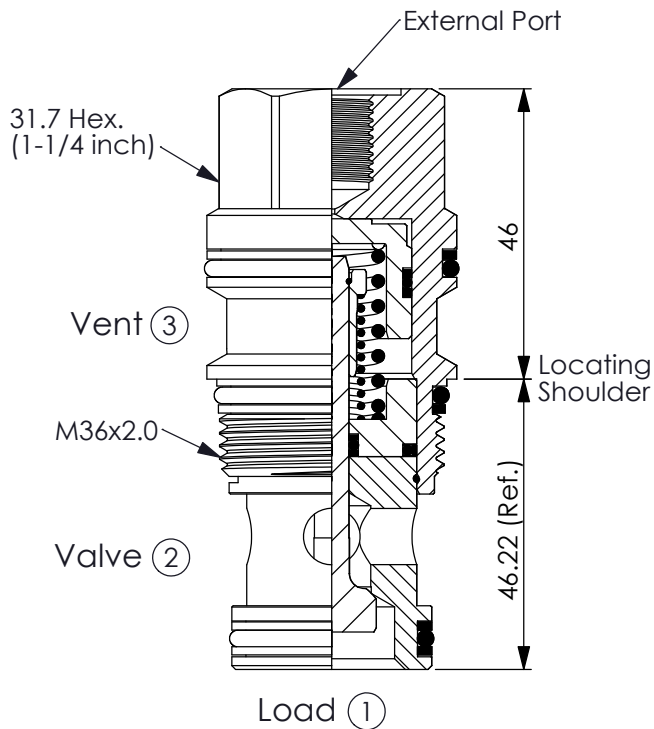
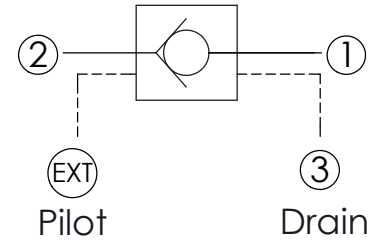


Ordering Code: **CO-17A-X-Y-Z**



UNIT:mm



TECHNICAL DATA

Max. Operating pressure: 350 bar

Rated flow: 240 l/min

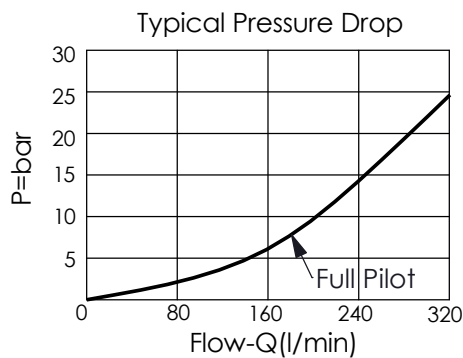
Cavity-Tooling: 17A-3

Installation torque: 200-215 Nm

Weight: 0.50 kg

Note:

The structure of the valve is with proportional pressure reducing characteristic, hence, the pressure of port ① is approximate 75% of pressure of port ②. For example: when port ② is 200 bar, port ① is approximate 150 bar.



X OPERATION

3F ② to ① (Free Flow)
Sealed Pilot Piston
Pilot Ratio 3:1

Note:

Port ③ is drain port, please connect to tank.

Y

SPRINGS

Cracking pressure

10 1.0 bar

20 2.0 bar

50 5.0 bar

Z

OPTION (External Ports)

G02

G 1/4"