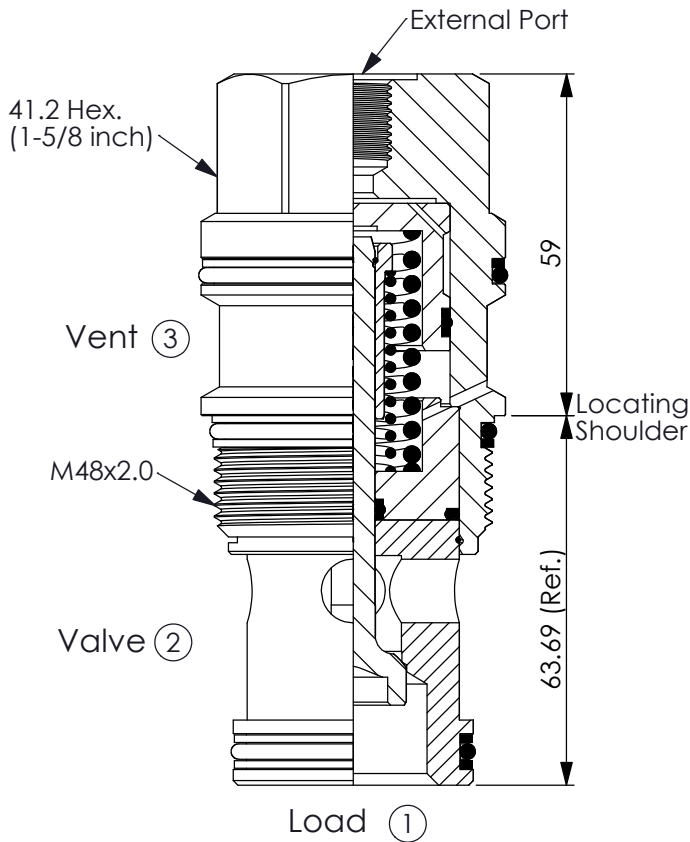
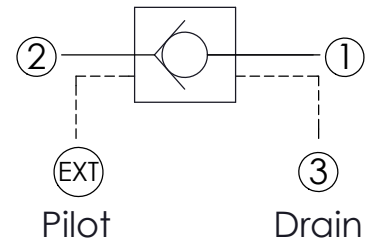


Ordering Code: **CO-19A-X-Y-Z**



UNIT:mm

Illustrations / detail are for reference only. Data subject to change.



TECHNICAL DATA

Max. Operating pressure: 350 bar

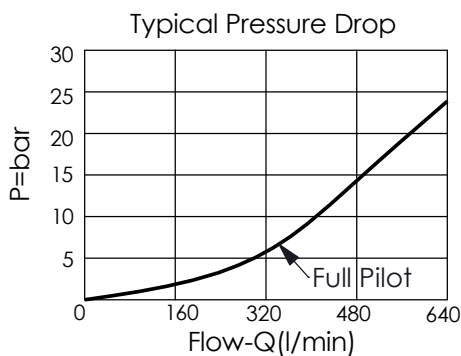
Rated flow: 480 l/min

Cavity-Tooling: 19A-3 (19AB-3)

Installation torque: 465 - 500 Nm

Weight: 1.17 kg

Note:
The structure of the valve is with proportional pressure reducing characteristic, hence, the pressure of port (1) is approximate 75% of pressure of port (2). For example: when port (2) is 200 bar, port (1) is approximate 150 bar.



X OPERATION

3F (2) to (1) (Free Flow)
Sealed Pilot Piston
Pilot Ratio 3:1

Note:
Port (3) is drain port, please connect to tank.

Y

SPRINGS

Cracking pressure

20 2.0 bar

50 5.0 bar

Z

OPTION (External Ports)

G02 G 1/4"