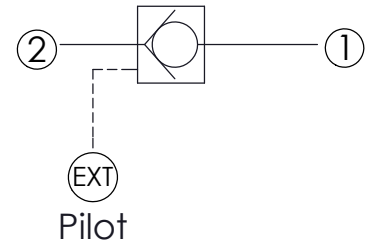
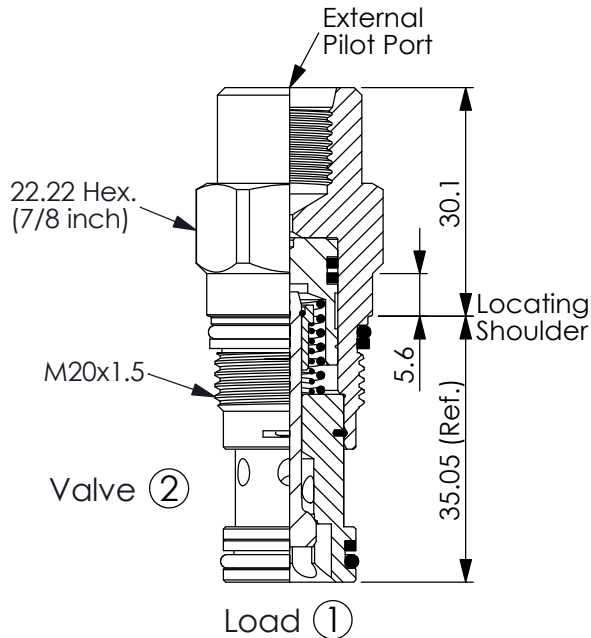


Ordering Code: **CO-13A-X-Y-Z**

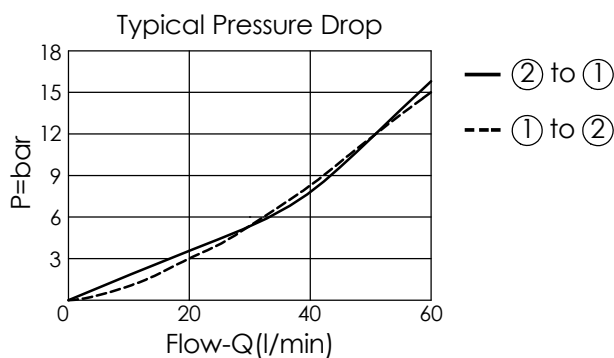


TECHNICAL DATA

Max. pressure:	350	bar
Rated flow:	60	l/min
Cavity-Tooling:	13A-2	
Installation torque:	40 - 50	Nm
Weight:	0.12	kg

UNIT:mm

Illustrations / detail are for reference only. Data subject to change.



X OPERATION

20 ② to ① (Free Flow)
Pilot Ratio 3:1

Y

SPRINGS

Cracking pressure

03	0.3 bar
20	2.0 bar
50	5.0 bar
70	7.0 bar

Z

OPTION (External Ports)

G02	External G1/4" Port
S04	External SAE-4 Port (7/16"-20UNF-2B)