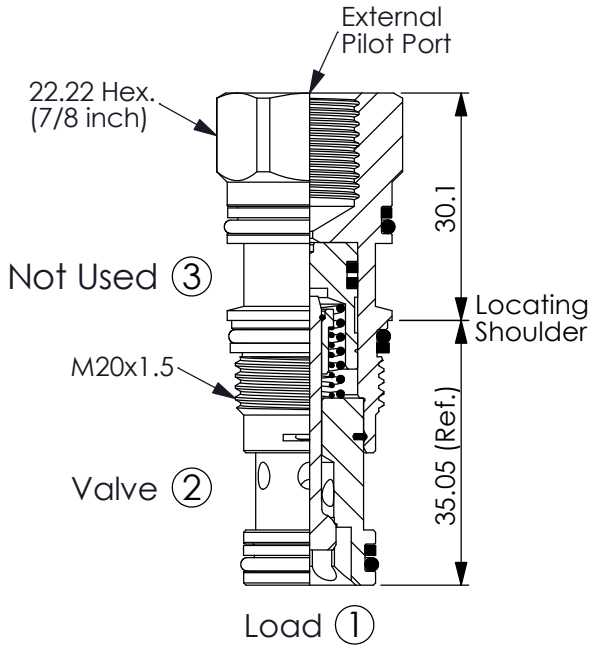


Ordering Code: **CO-11A-X-Y-Z**

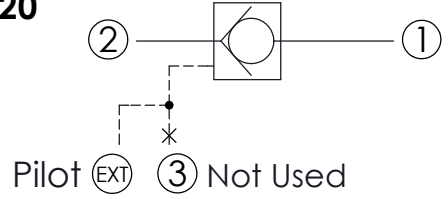
Sectional Drawings X=20



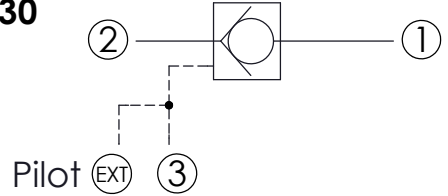
UNIT:mm

Illustrations / detail are for reference only. Data subject to change.

X=20

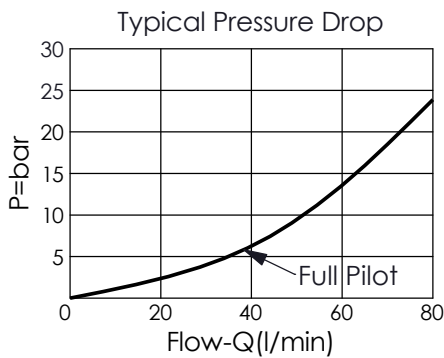


X=30



TECHNICAL DATA

Max. pressure:	350	bar
Rated flow:	60	l/min
Cavity-Tooling:	11A-3	
Installation torque:	40 - 50	Nm
Weight Approximately:	0.12	kg



X OPERATION

20	② to ① (Free Flow) Pilot Ratio 3:1 Port ③ Not Used
30	② to ① (Free Flow) Pilot Ratio 3:1 Port ③ Can Be Used

Y

SPRINGS

Cracking pressure

007	0.07 bar
03	0.3 bar
10	1.0 bar
20	2.0 bar
35	3.5 bar
50	5.0 bar
70	7.0 bar

Z

OPTION (External Ports)

G02	External G1/4" Port
S04	External SAE-4 Port (7/16"-20UNF-2B)