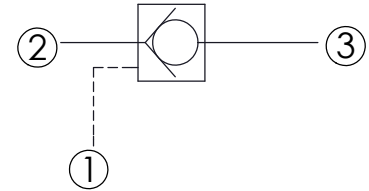
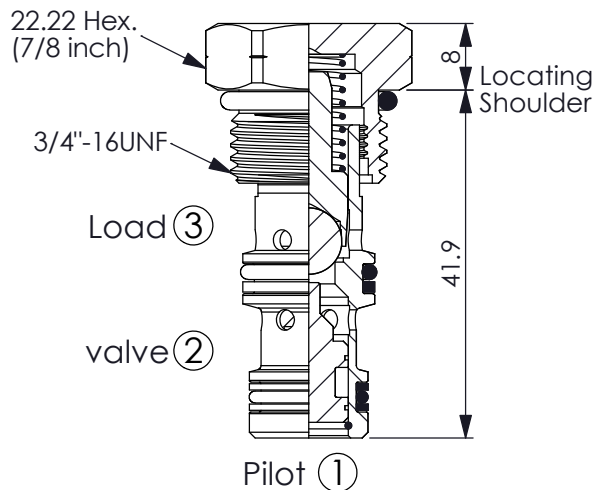


Ordering Code: **CO-08W-X-Y-Z**

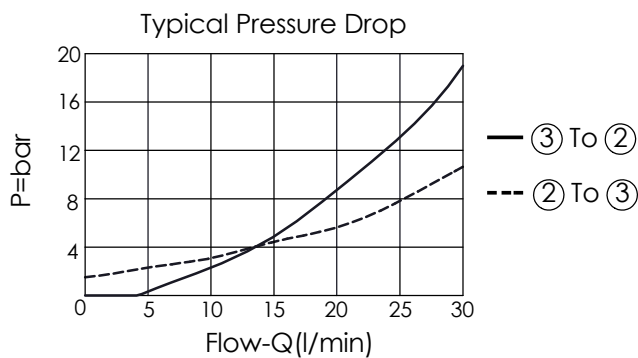
Example: **CO-08W-30-17-N**
Example: **CO-08W-3A-69-N**



TECHNICAL DATA

Max. pressure:	240	bar
Rated flow:	30	l/min
Cavity-Tooling:	08W-3	
Installation torque:	25-35	Nm
Weight:	0.06	kg

UNIT:mm



X OPERATION

30	② to ③ (Free Flow) Pilot Ratio 2:1 (Check Spring Bias) (Min. 1.7 bar)
3A	② to ③ (Free Flow) Sealed Pilot Piston Pilot Ratio 2:1 (Check Spring Bias) (Min. 4.1 bar)

Y

SPRINGS

Cracking pressure

17	1.7 bar
41	4.1 bar
69	6.9 bar
82	8.2 bar
103	10.3 bar
138	13.8 bar
176	17.6 bar

Z OPTION

N Non-adjustable