

Ordering Code: **CR-10W-X-Y-Z**

4.0 Hex.
Turn screw clockwise to increase pressure setting.

Control Option: Maximum extension from locating shoulder. (Z=L Control shown)

3/8"-24UNF-2A

14.27 Hex. (9/16 inch)
Torque 9 - 10 Nm
Apply CH (5JAA097)
Plastic tamper resistant cover

Ø 25

78

25.4 Hex. (1.0 inch)

Locating Shoulder

10.2

31.9

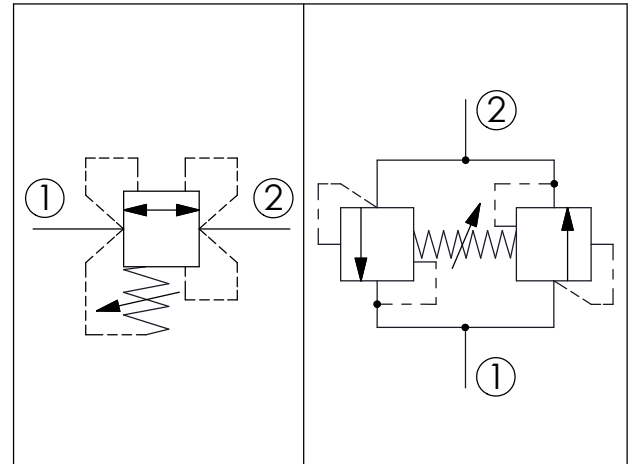
7/8"-14UNF-2A

Outlet (Inlet) ②

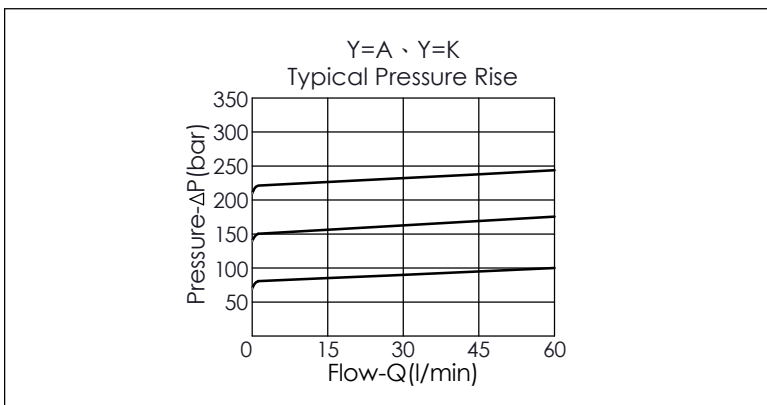
Inlet (Outlet) ①

UNIT:mm

Illustrations / detail are for reference only. Data subject to change.



TECHNICAL DATA	
Max. Operating pressure:	350 bar
Rated flow:	60 l/min
Cavity-Tooling:	10W-2
Installation torque:	35 - 45 Nm
Weight:	0.236 (Z=L) kg



X	OPERATION	
20	Standard Type	
<ul style="list-style-type: none"> Response Time-Typical (2 ms) Maximum Leakage Approximately (0.7 cc/min.) Dirt tolerant 		

Y	SPRINGS	
	ADJUSTMENT RANGES	
A	160 - 240 bar	(180 bar Standard Setting)
K	14 - 168 bar	(80 bar Standard Setting)
W	105 - 350 bar	(105 bar Standard Setting)

Z	OPTIONS	
L	Leakproof hex. socket screw.	
K	Handknob with Lock Knob. (Order Code: 6ZAK001)	
CH	Plastic Tamper Resistant Cover of General Type Hex. Nut	