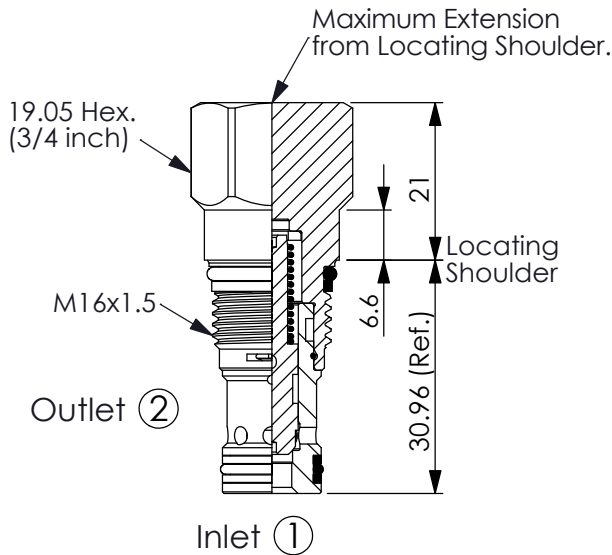
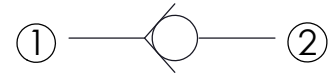


Ordering Code: **CV-162A-X-Y-Z**



UNIT:mm

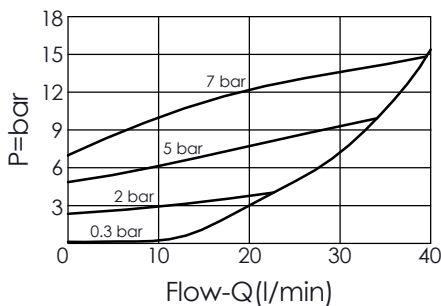
Illustrations / detail are for reference only. Data subject to change.



TECHNICAL DATA

Max. Operating pressure:	350	bar
Rated flow:	40	l/min
Cavity-Tooling:	162A-2	
Installation torque:	27 - 33	Nm
Weight:	0.08	kg

Typical Pressure Drop



X OPERATION

20 ① to ② (Free Flow)

Y

SPRINGS

Cracking pressure

007	0.07 bar
03	0.3 bar
10	1.0 bar
20	2.0 bar
35	3.5 bar
50	5.0 bar
70	7.0 bar

Z OPTION

N	Non-adjustable	
NP	Non-adjustable With stainless steel external metal components (Buna-N Seal)	