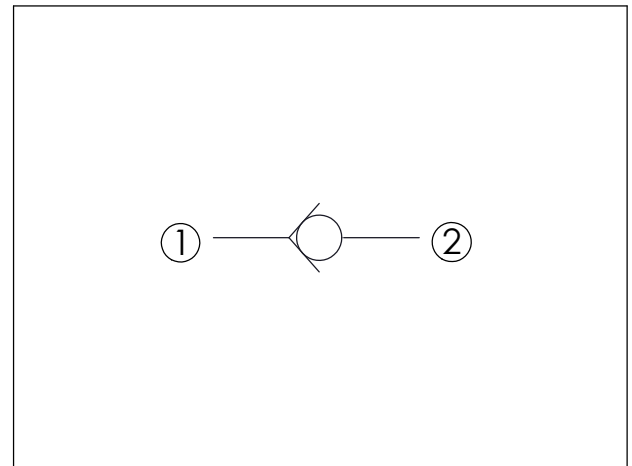


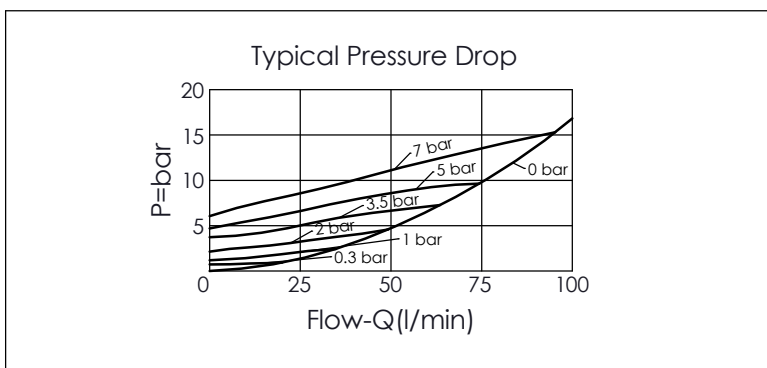
Ordering Code: **CV-13A-X-Y-Z**

Control Option:
Maximum extension
from locating shoulder.
(Z=L Control shown)

UNIT:mm



TECHNICAL DATA		
Max. Operating pressure:	350 bar	
Rated flow:	80	l/min
Cavity-Tooling:	13A-2	
Installation torque:	40 - 50	Nm
Weight:	0.10 (Z=N,NP)	kg
	0.14 (Z=L)	kg



Y	SPRINGS	
	Cracking pressure	
00	0 bar (without spring)	
007	0.07 bar	
015	0.15 bar	
03	0.3 bar	
10	1.0 bar	
20	2.0 bar	
35	3.5 bar	
50	5.0 bar	
70	7.0 bar	
105	10.5 bar	

X	OPERATION	
20	① to ② (Free Flow)	

Z	OPTION	
N	Non-adjustable	
NP	Non-adjustable With stainless steel external metal components (Buna-N Seal)	
L	Leakproof hex. socket screw.	
K	Handknob with Lock Knob. (Order Code: 6ZAK001)	