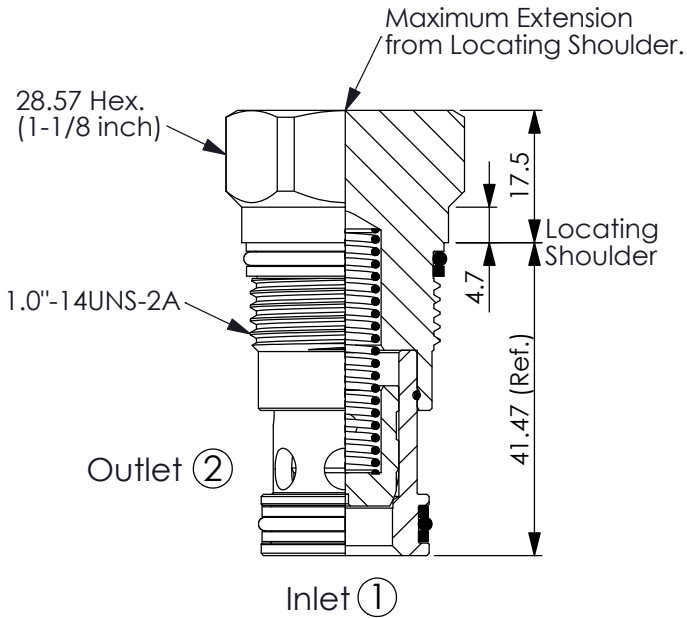
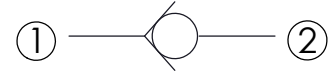


Ordering Code: **CV-5A-X-Y-Z**



UNIT:mm

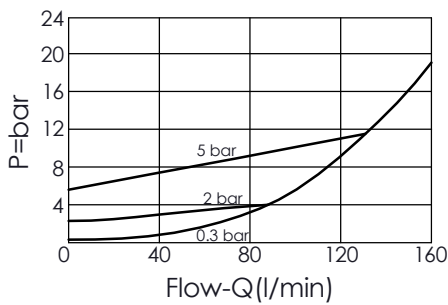
Illustrations / detail are for reference only. Data subject to change.



TECHNICAL DATA

Max. Operating pressure:	350	bar
Rated flow:	160	l/min
Cavity-Tooling:	5A-2	
Installation torque:	60 - 70	Nm
Weight:	0.19 (Z=N,NP)	kg

Typical Pressure Drop



X OPERATION

20 ① to ② (Free Flow)

Y SPRINGS

Cracking pressure

Y	Cracking pressure
007	0.07 bar
015	0.15 bar
03	0.3 bar
10	1.0 bar
20	2.0 bar
35	3.5 bar
50	5.0 bar
70	7.0 bar

Z OPTION

N	Non-adjustable	
NP	Non-adjustable With stainless steel external metal components (Buna-N Seal)	