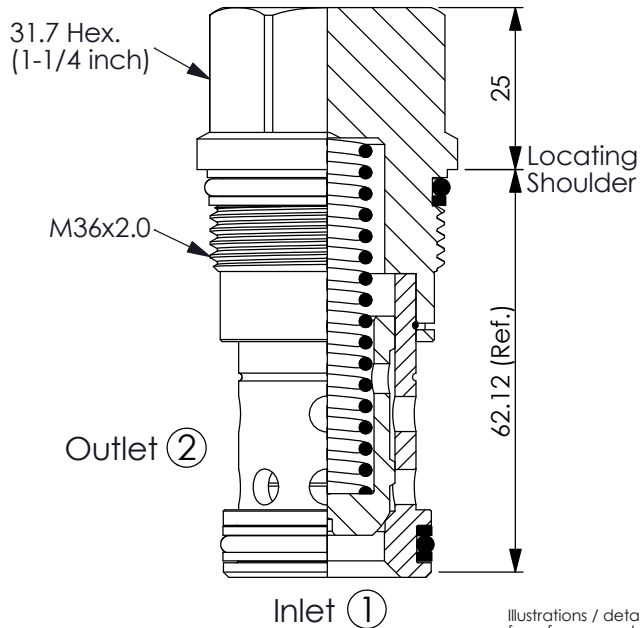
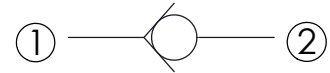


Ordering Code: **CV-16A-X-Y-Z**



UNIT:mm

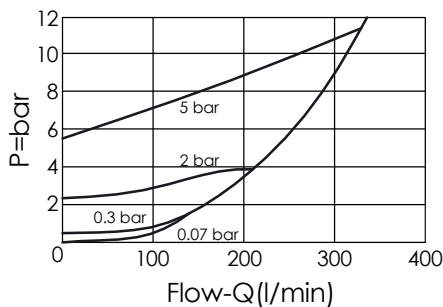
Illustrations / detail are for reference only. Data subject to change.



TECHNICAL DATA

Max. Operating pressure:	350	bar
Rated flow:	320	l/min
Cavity-Tooling:	16A-2	
Installation torque:	200 - 215	Nm
Weight:	0.42	kg

Typical Pressure Drop



X OPERATION

20 ① to ② (Free Flow)

Y SPRINGS

Cracking pressure

Y	Cracking pressure
007	0.07 bar
015	0.15 bar
01	0.1 bar
03	0.3 bar
07	0.7 bar
10	1.0 bar
20	2.0 bar
35	3.5 bar
50	5.0 bar
70	7.0 bar
105	10.5 bar

Z OPTION

N	Non-adjustable	
NP	Non-adjustable With stainless steel external metal components (Buna-N Seals)	
N-V	Non-adjustable (VITON Seals)	
N-1	Non-adjustable (Buna-N Seals) (PTFE Back-up Rings)	