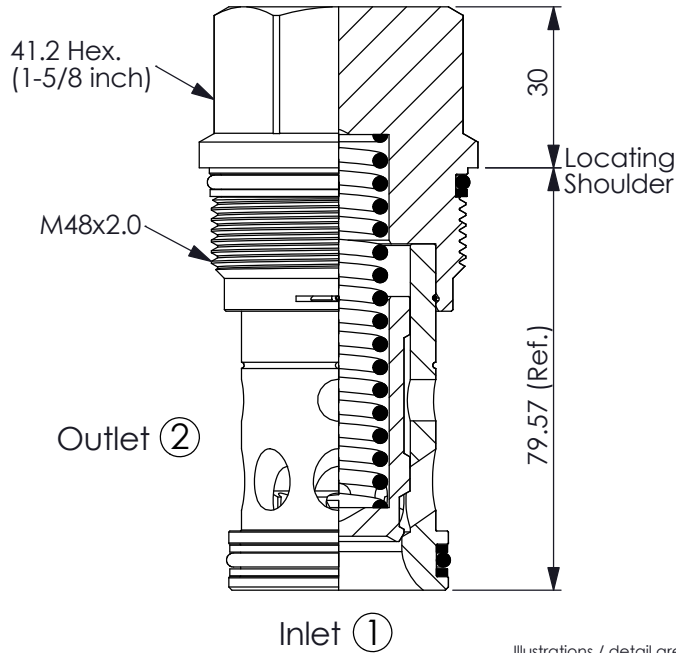
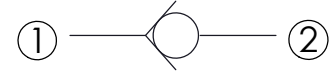


Ordering Code: **CV-18AB-X-Y-Z**



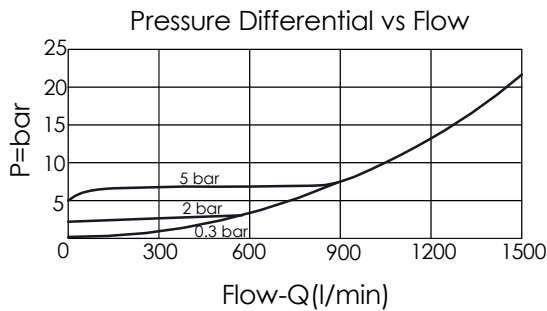
UNIT:mm

Illustrations / detail are for reference only. Data subject to change.



TECHNICAL DATA

Max. Operating pressure:	350	bar
Rated flow:	900	l/min
Cavity-Tooling:	18AB-2	
Installation torque:	465 - 500	Nm
Weight:	0.9	kg



Y	SPRINGS	
	Cracking pressure	
015	0.15 bar	
01	0.1 bar	
03	0.3 bar	
10	1.0 bar	
20	2.0 bar	
35	3.5 bar	
50	5.0 bar	
70	7.0 bar	
105	10.5 bar	

X	OPERATION	
20	① to ② (Free Flow)	

Z	OPTION	
N	Non-adjustable	