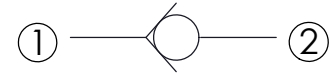
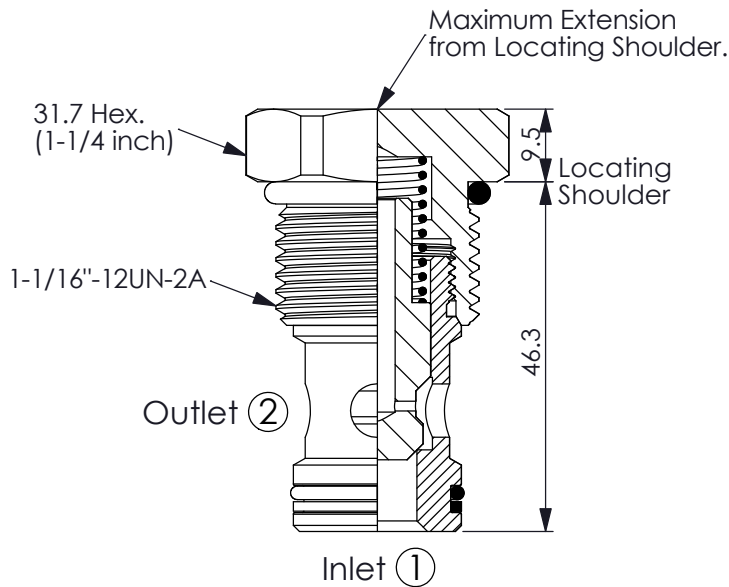


Ordering Code: **CV-12W-X-Y-Z**

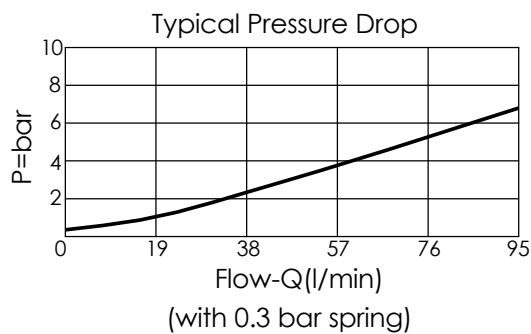


### TECHNICAL DATA

Max. pressure:	240	bar
Rated flow:	90	l/min
Cavity-Tooling:	12W-2	
Installation torque:	45 - 55	Nm
Weight:	0.17	kg

UNIT:mm

Illustrations / detail are for reference only. Data subject to change.



### X OPERATION

**20** ① to ② (Free Flow)

### Y SPRINGS

Cracking pressure

<b>03</b>	0.3 bar
<b>17</b>	1.7 bar
<b>21</b>	2.1 bar
<b>41</b>	4.1 bar
<b>69</b>	6.9 bar

### Z OPTION

**N** Non-adjustable 