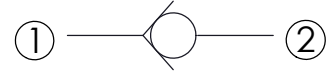
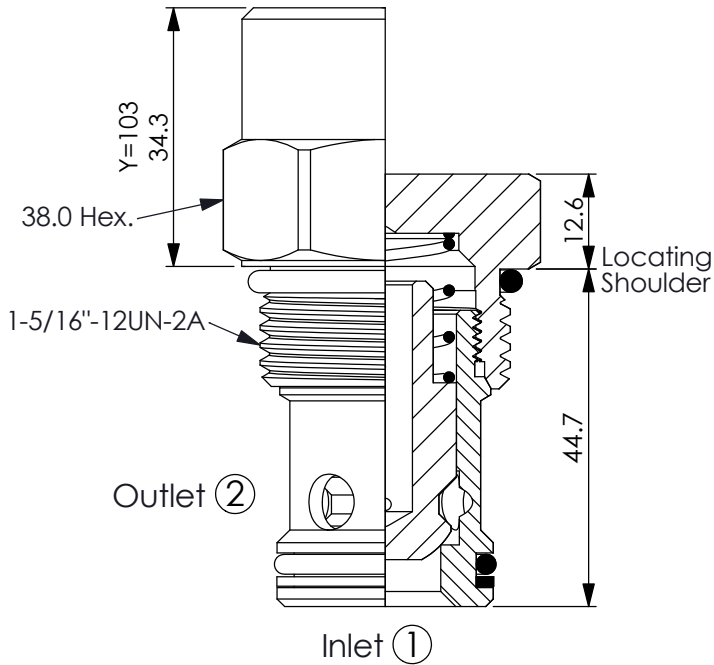


Ordering Code: **CV-16W-X-Y-Z**

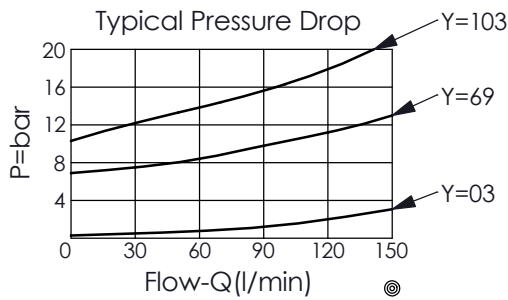


TECHNICAL DATA

Max. pressure:	240	bar
Rated flow:	150	l/min
Cavity-Tooling:	16W-2	
Installation torque:	60 - 70	Nm
Weight:	0.27 0.414 (Y=103)	kg

UNIT:mm

Illustrations / detail are for reference only. Data subject to change.



X OPERATION

20 ① to ② (Free Flow)

Y

SPRINGS

Cracking pressure

00	0 bar (without spring)
03	0.3 bar
17	1.7 bar
41	4.1 bar
69	6.9 bar
103	10.3 bar

Z

OPTION

N

Non-adjustable