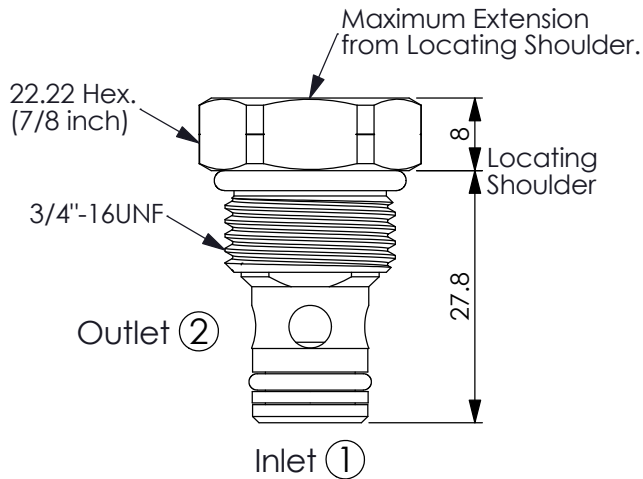
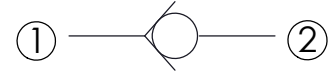


Ordering Code: **CV-08W-X-Y-Z-2**



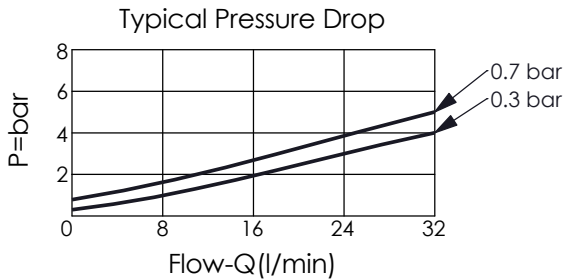
UNIT:mm

Illustrations / detail are for reference only. Data subject to change.



TECHNICAL DATA

Max. pressure:	350	bar
Rated flow:	30	l/min
Cavity-Tooling:	08W-2	
Installation torque:	28 - 35	Nm
Weight:	0.05	kg



X OPERATION

20 ① to ② (Free Flow)

Y

SPRINGS

Cracking pressure

03	0.3 bar	
07	0.7 bar	
17	1.7 bar	
28	2.8 bar	
34	3.4 bar	
41	4.1 bar	
69	6.9 bar	
103	10.3 bar	
138	13.8 bar	
176	17.6 bar	

Z OPTION

N Non-adjustable