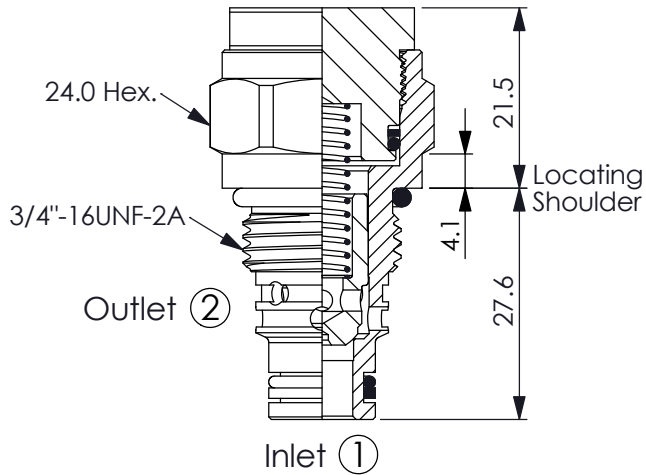
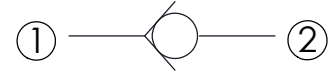


Ordering Code: **CV-08W-X-Y-Z**



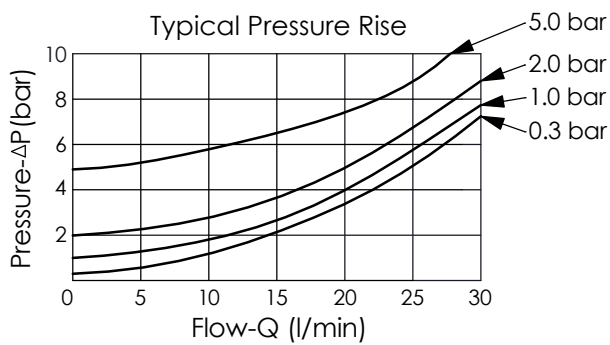
UNIT:mm

Illustrations / detail are for reference only. Data subject to change.



TECHNICAL DATA

Rated pressure:	350	bar
Rated flow:	30	l/min
Cavity-Tooling:	08W-2	
Installation torque:	39 - 51	Nm
Weight:	0.10	kg



X OPERATION

22 ① to ② (Free Flow)

Y

SPRINGS

Cracking pressure

00	0 bar (without spring)
03	0.3 bar
10	1.0 bar
20	2.0 bar
50	5.0 bar

Z

OPTION

N Non-adjustable

