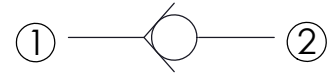
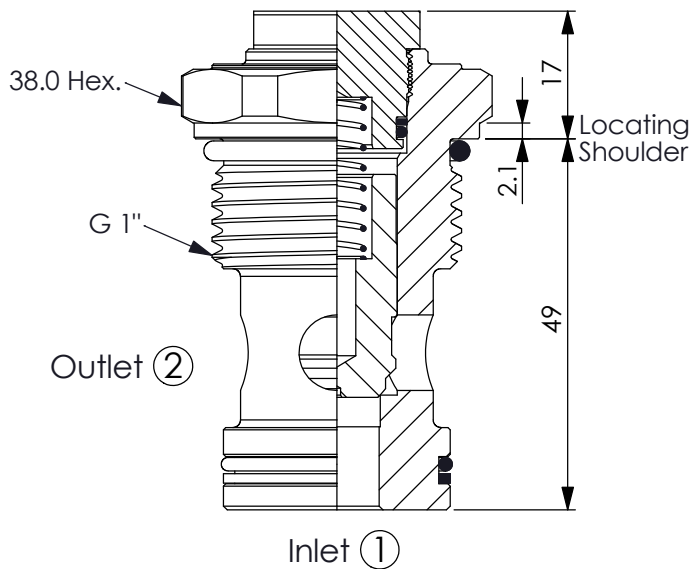


Ordering Code: **CV-21E-X-Y-Z**



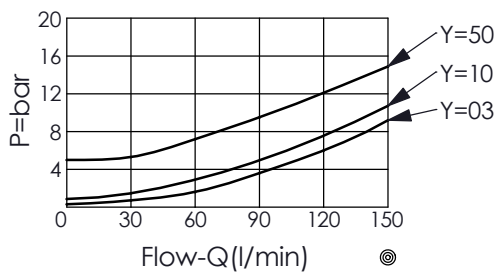
TECHNICAL DATA

Rated pressure:	350	bar
(Max. pressure:	420	bar)
Rated flow:	150	l/min
Cavity-Tooling:	21E-2	
Installation torque:	70 - 90	Nm
Weight:	0.31	kg

UNIT:mm

Illustrations / detail are for reference only. Data subject to change.

Typical Pressure Drop



X OPERATION

22 ① to ② (Free Flow)

Y

SPRINGS

Cracking pressure

03	0.3 bar
10	1.0 bar
50	5.0 bar

Z

OPTION

N Non-adjustable 