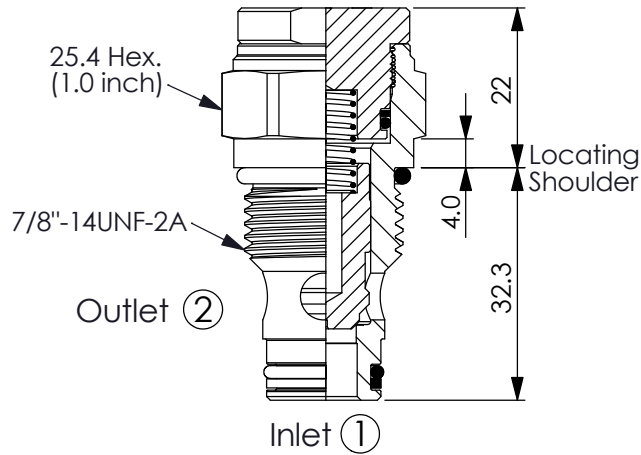
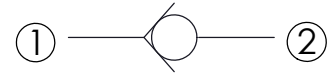


Ordering Code: **CV-10W-X-Y-Z**



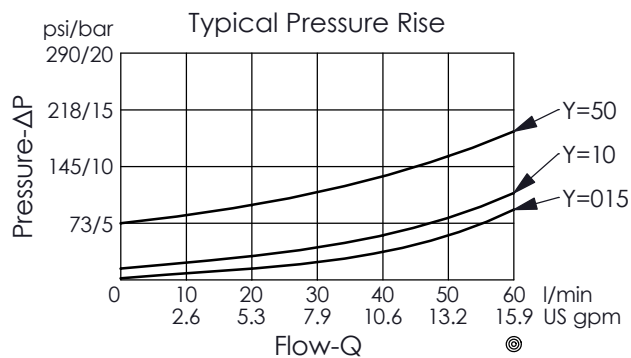
UNIT:mm

Illustrations / detail are for reference only. Data subject to change.



TECHNICAL DATA

Rated pressure:	350	bar
(Max. pressure:	420	bar)
Rated flow:	60	l/min
Cavity-Tooling:	10W-2	
Installation torque:	40 - 45	Nm
Weight:	0.14	kg



X OPERATION

22 ① to ② (Free Flow)

Y

SPRINGS

Cracking pressure

015	0.15 bar
03	0.3 bar
10	1.0 bar
20	2.0 bar
50	5.0 bar

Z OPTION

N Non-adjustable

