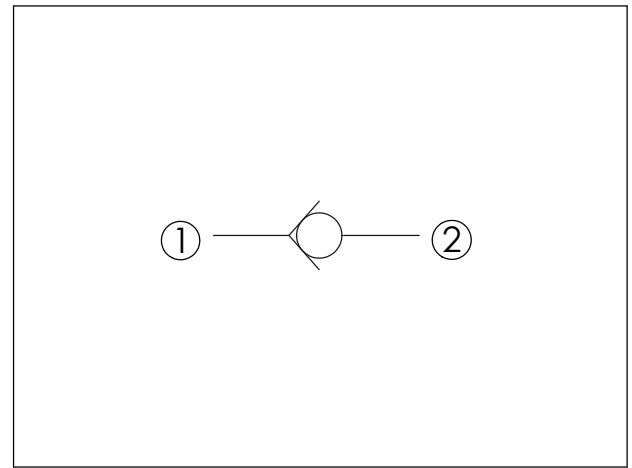
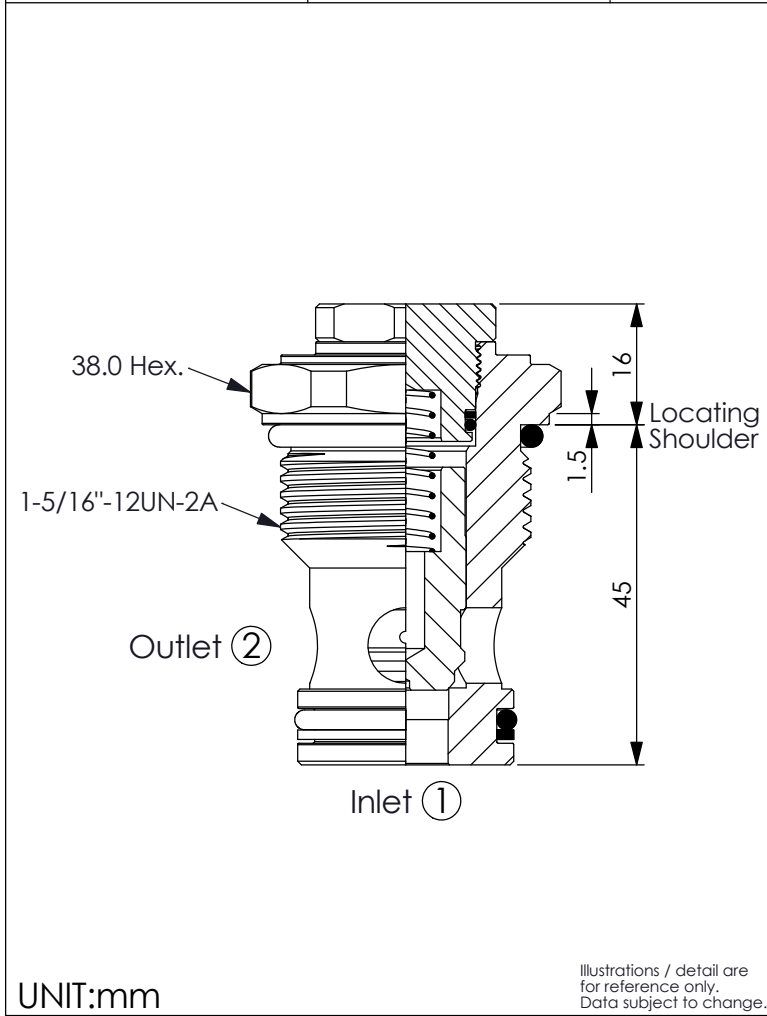
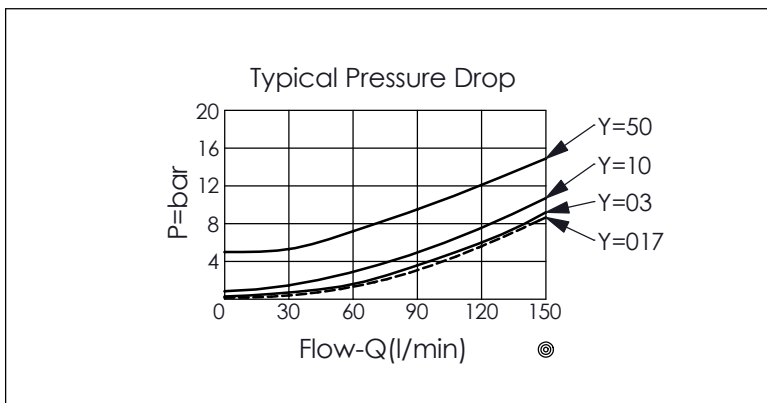


Ordering Code: **CV-16W-X-Y-Z**



TECHNICAL DATA		
Rated pressure:	350	bar
(Max. pressure:	420	bar)
Rated flow:	150	l/min
Cavity-Tooling:	16W-2	
Installation torque:	60 - 70	Nm
Weight:	0.29	kg



X	OPERATION	
22	① to ② (Free Flow)	

Y	SPRINGS	
	Cracking pressure	
017	0.17 bar	
03	0.3 bar	
10	1.0 bar	
50	5.0 bar	

Z	OPTION	
N	Non-adjustable	