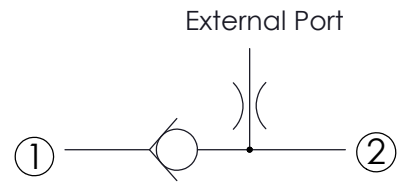
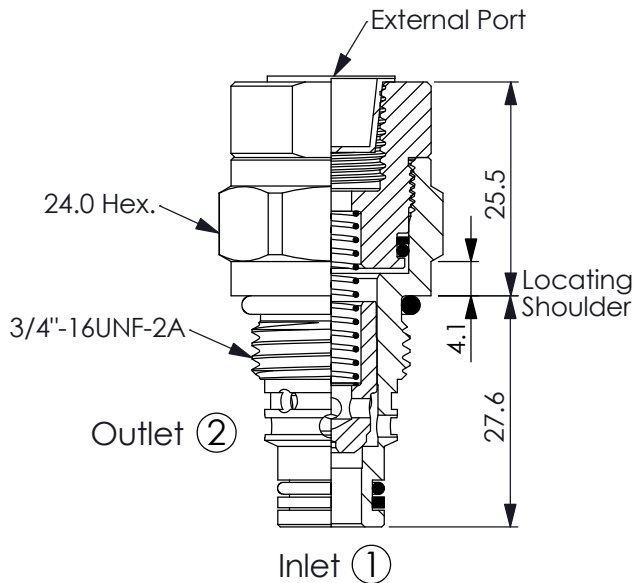


Ordering Code: **CV-08W-X-Y-Z**

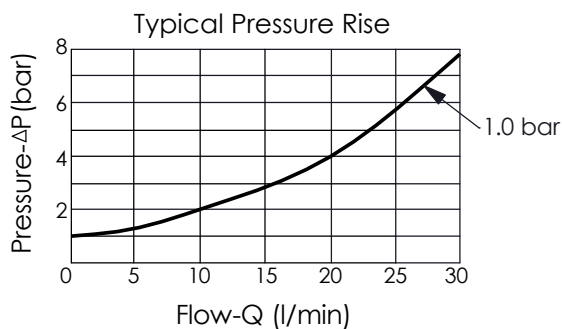


### TECHNICAL DATA

Rated pressure:	350	bar
(Max. pressure:	420	bar)
Rated flow:	30	l/min
Cavity-Tooling:	08W-2	
Installation torque:	39 - 51	Nm
Weight:	0.10	kg

UNIT:mm

Illustrations / detail are for reference only. Data subject to change.



### X OPERATION

**22** ① to ② (Free Flow)

### Y SPRINGS

Cracking pressure

Y	Cracking pressure
<b>03</b>	0.3 bar
<b>10</b>	1.0 bar
<b>20</b>	2.0 bar
<b>50</b>	5.0 bar

### Z OPTION (External Port)

**G02**

G 1/4"

