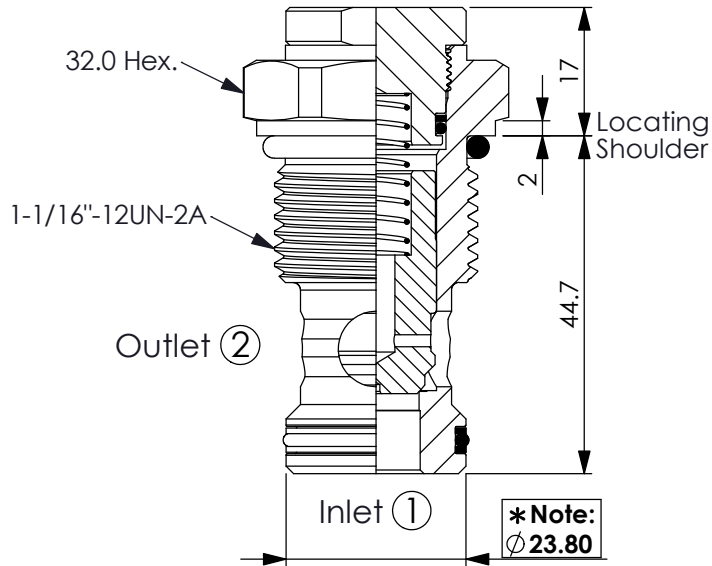


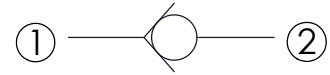
Ordering Code: **CV-12WA-X-Y-Z**



\* Note:  
 $\varnothing 23.80$

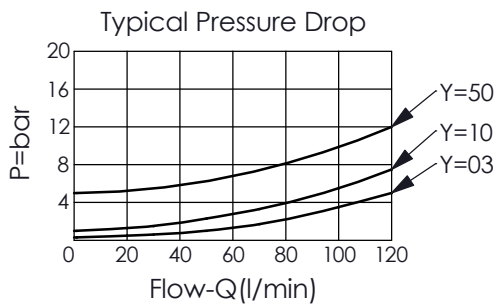
UNIT:mm

Illustrations / detail are for reference only. Data subject to change.



### TECHNICAL DATA

Rated pressure:	350	bar
(Max. pressure:	420	bar)
Rated flow:	120	l/min
Cavity-Tooling:	12WA-2	
Installation torque:	45 - 55	Nm
Weight:	0.198	kg



### X OPERATION

**22** ① to ② (Free Flow)

• Maximum Leakage Approximately 0.07 cc/min. (1 drop/min.)

**Y**

### SPRINGS

Cracking pressure

<b>03</b>	0.3 bar
<b>10</b>	1.0 bar
<b>50</b>	5.0 bar

**Z**

### OPTION

**N** Non-adjustable