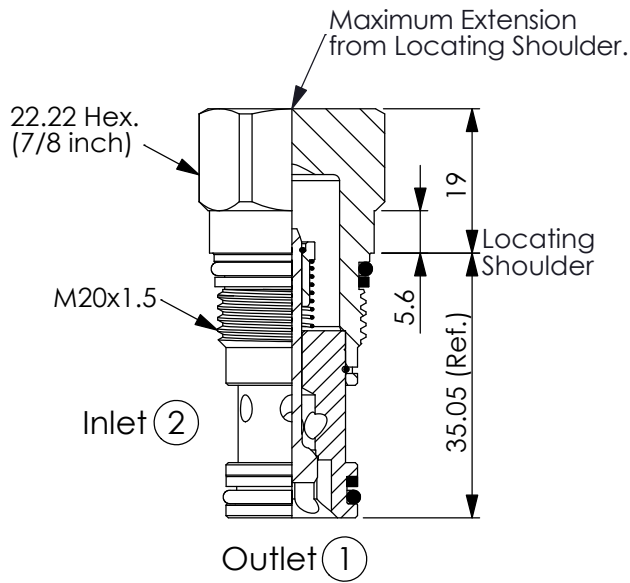
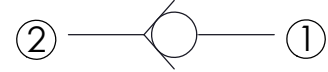


Ordering Code: **CV-13A-X-Y-Z**



UNIT:mm

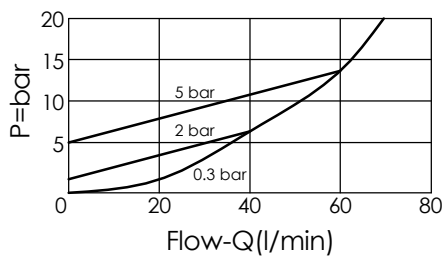
Illustrations / detail are for reference only. Data subject to change.



TECHNICAL DATA

Max. Operating pressure:	350	bar
Rated flow:	60	l/min
Cavity-Tooling:	13A-2	
Installation torque:	40 - 50	Nm
Weight:	0.10 (Z=N) 0.12 (Z=NP)	kg

Typical Pressure Drop



X OPERATION

21 ② to ① (Free Flow)

Y

SPRINGS

Cracking pressure

01	0.1 bar	
03	0.3 bar	
10	1.0 bar	
20	2.0 bar	
35	3.5 bar	
50	5.0 bar	
70	7.0 bar	

Z OPTION

N	Non-adjustable		
NP	Non-adjustable With stainless steel external metal components (Buna-N Seal)		