

Ordering Code: **CV-5A-X-Y-Z**

Control Option:
Maximum extension
from locating shoulder.
(Z=L Control shown)

4.0 Hex.

3/8"-24UNF-2A

14.27 Hex. (9/16 inch)
Torque 9 - 10 Nm
Apply CH (5JAA097)
Plastic tamper
resistant cover

Maximum Extension
from Locating Shoulder.

Ø 25

L=54
N=17.5

28.57 Hex.
(1-1/8 inch)

1.0"-14UNS-2A

Inlet (2)

Locating
Shoulder

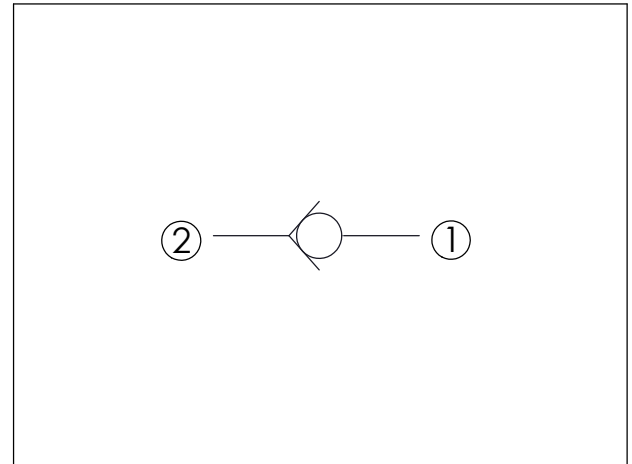
4.7

41.47 (Ref.)

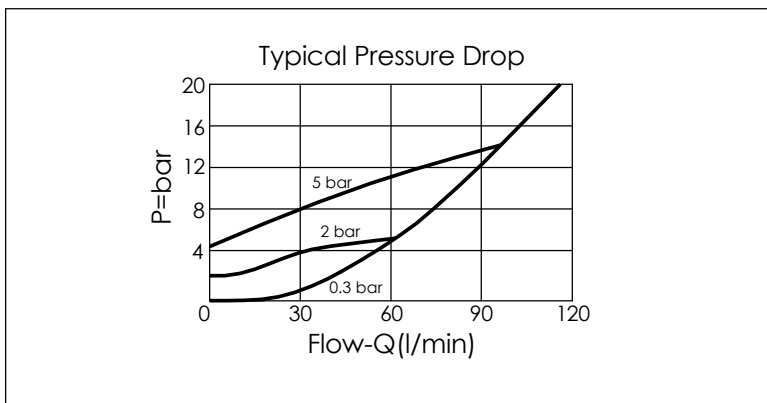
Outlet (1)

UNIT:mm

Illustrations / detail are
for reference only.
Data subject to change.



| TECHNICAL DATA | |
|--------------------------|-------------------------------|
| Max. Operating pressure: | 350 bar |
| Rated flow: | 120 l/min |
| Cavity-Tooling: | 5A-2 |
| Installation torque: | 60 - 70 Nm |
| Weight: | 0.169 (Z=N) 0.257 (Z=L) kg |



| X | OPERATION |
|----|--------------------|
| 21 | ② to ① (Free Flow) |

| Y | SPRINGS | |
|-----|-------------------|--|
| | Cracking pressure | |
| 015 | 0.15 bar | |
| 03 | 0.3 bar | |
| 10 | 1.0 bar | |
| 20 | 2.0 bar | |
| 35 | 3.5 bar | |
| 50 | 5.0 bar | |
| 70 | 7.0 bar | |

| Z | OPTION |
|----|--|
| N | Non-adjustable |
| NP | Non-adjustable With stainless steel external metal components (Buna-N Seal) |
| L | Leakproof hex. socket screw. |
| K | Handknob with Lock Knob. (Order Code: 6ZAK001) |