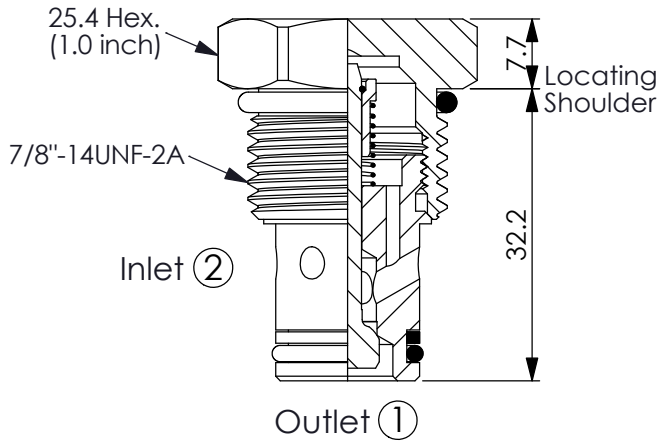
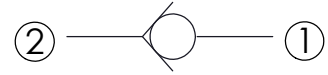


Ordering Code: **CV-10W-X-Y-Z**



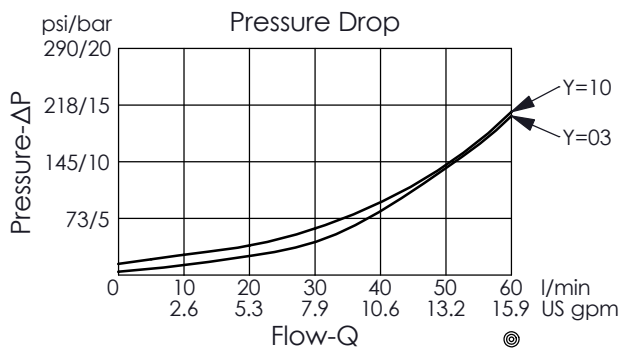
UNIT:mm

Illustrations / detail are for reference only. Data subject to change.



TECHNICAL DATA

Max. pressure:	240	bar
Rated flow:	60	l/min
Cavity-Tooling:	10W-2	
Installation torque:	30 - 35	Nm
Weight:	0.075	kg



X OPERATION

21 ② to ① (Free Flow)

Y

SPRINGS

Cracking pressure

01	0.1 bar	
03	0.3 bar	
10	1.0 bar	
20	2.0 bar	
35	3.5 bar	
50	5.0 bar	
70	7.0 bar	

Z OPTION

N Non-adjustable 