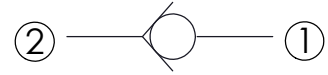
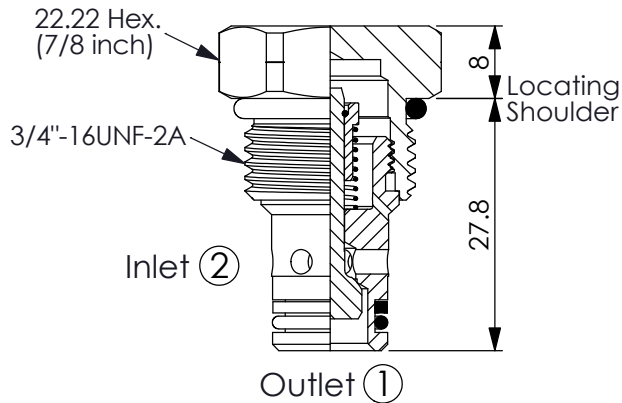


Ordering Code: **CV-08W-X-Y-Z-2**

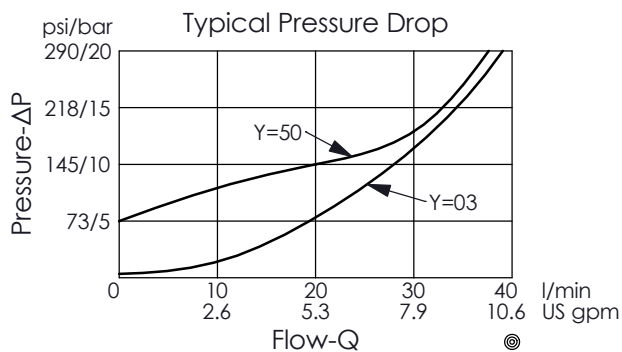


TECHNICAL DATA

Rated pressure:	350	bar
(Max. pressure:	420	bar)
Rated flow:	30	l/min
Cavity-Tooling:	08W-2	
Installation torque:	28 - 35	Nm
Weight:	0.048	kg

UNIT:mm

Illustrations / detail are for reference only. Data subject to change.



X OPERATION

21 ② to ① (Free Flow)

Y SPRINGS

Cracking pressure

007	0.07 bar	
03	0.3 bar	
10	1.0 bar	
20	2.0 bar	
35	3.5 bar	
50	5.0 bar	
70	7.0 bar	

Z OPTION

N Non-adjustable 