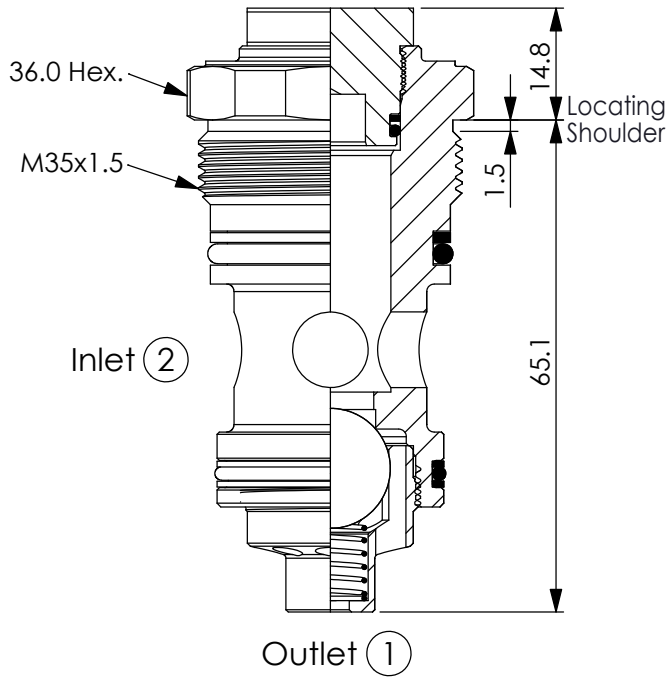
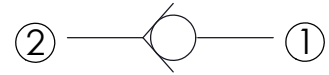


Ordering Code: **CV-35MV-X-Y-Z**



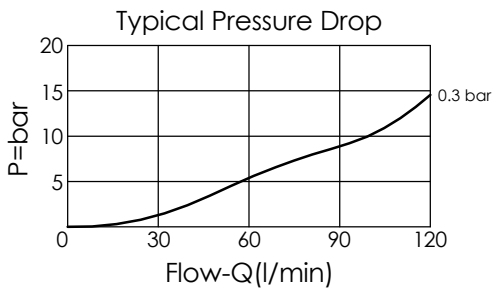
UNIT:mm

Illustrations / detail are for reference only. Data subject to change.



TECHNICAL DATA

Max. pressure:	350	bar
Rated flow:	100	l/min
Cavity-Tooling:	35MV-2	
Installation torque:	80 - 100	Nm
Weight:	0.29	kg



X OPERATION

21 (2) to (1) (Free Flow)

Y SPRINGS

Cracking pressure

Y	Cracking pressure
01	0.1 bar
03	0.3 bar
10	1.0 bar
20	2.0 bar
35	3.5 bar
50	5.0 bar
70	7.0 bar

Z OPTION

N Non-adjustable