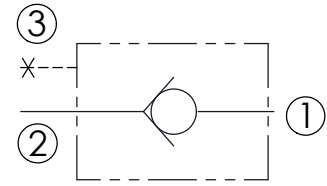
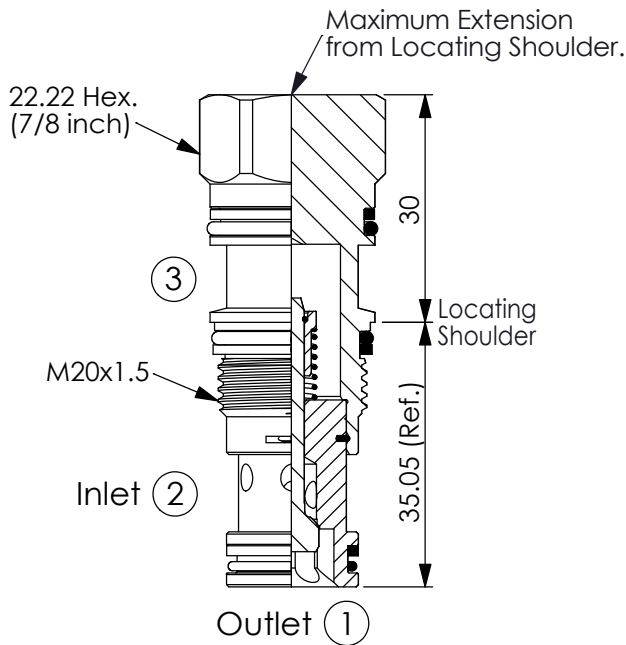


Ordering Code: **CV-11A-X-Y-Z**

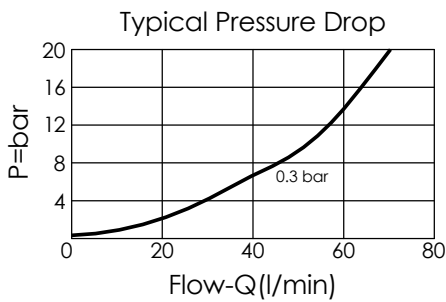


TECHNICAL DATA

Max. Operating pressure:	350	bar
Rated flow:	60	l/min
Cavity-Tooling:	11A-3	
Installation torque:	40 - 50	Nm
Weight:	0.12	kg

UNIT:mm

Illustrations / detail are for reference only. Data subject to change.



X OPERATION

21 ② to ① (Free Flow)

Y SPRINGS

Cracking pressure

Y	Cracking pressure
01	0.1 bar
03	0.3 bar
10	1.0 bar
20	2.0 bar
35	3.5 bar
50	5.0 bar
70	7.0 bar

Z OPTION

N Non-adjustable