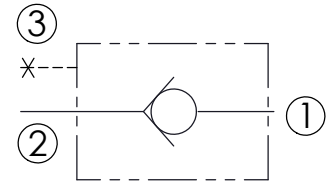
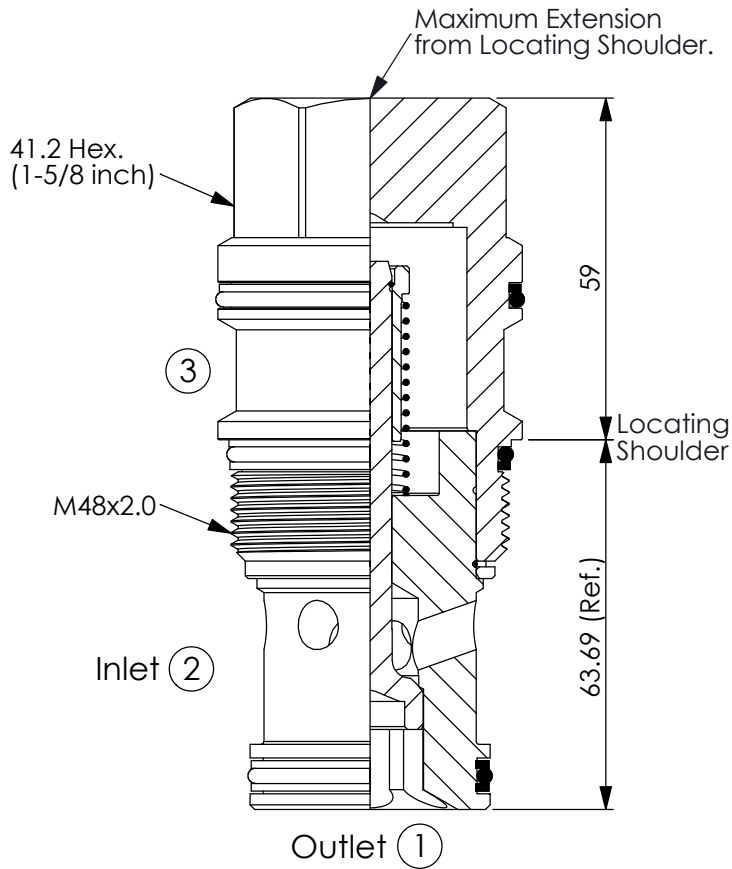


Ordering Code: **CV-19A-X-Y-Z**

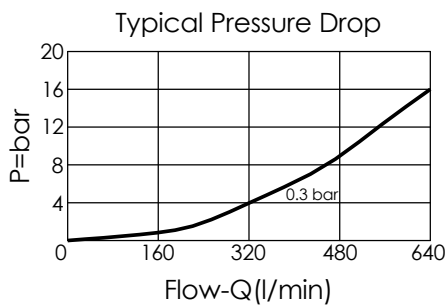


### TECHNICAL DATA

Max. Operating pressure:	350	bar
Rated flow:	480	l/min
Cavity-Tooling:	19A-3 (19AB-3)	
Installation torque:	465 - 500	Nm
Weight:	1.08	kg

UNIT:mm

Illustrations / detail are for reference only. Data subject to change.



### X OPERATION

**21** ② to ① (Free Flow)

### Y SPRINGS

Cracking pressure

Y	Cracking pressure
<b>015</b>	0.15 bar
<b>03</b>	0.3 bar
<b>10</b>	1.0 bar
<b>20</b>	2.0 bar
<b>35</b>	3.5 bar
<b>50</b>	5.0 bar
<b>70</b>	7.0 bar

### Z OPTION

**N** Non-adjustable