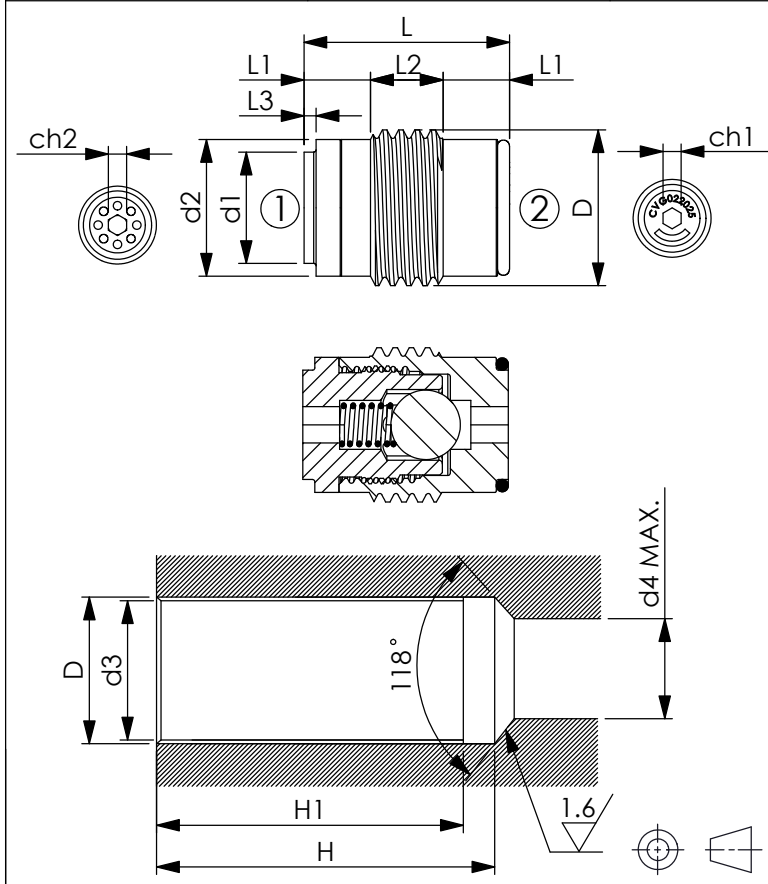
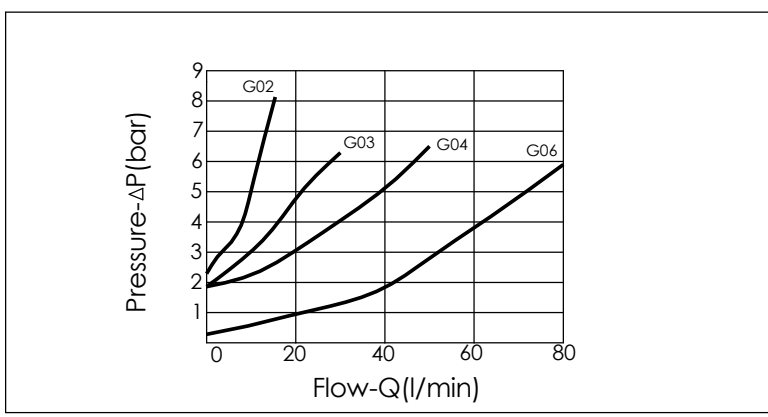


Ordering Code: **CV-X-Y-Z**

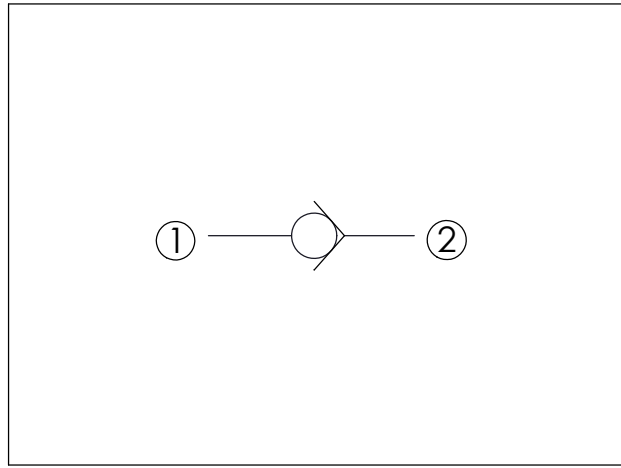


UNIT:mm
Illustrations / detail are for reference only. Data subject to change.

X=	D	L	L1	L2	L3	H	H1	ch1	ch2	d1	d2	d3	d4
G02	G 1/4"	17	5.5	6	1	28	25	3	3	9.2	11.3	11.8	8
G03	G 3/8"	18.5	5.5	7.5	1.8	30	27	4	3	11	14.8	15.2	9
G04	G 1/2"	22.5	6.5	9.5	1.8	36	32	6	5	14.2	18.5	19	12
G06	G 3/4"	28.5	7	14.5	2.7	42	37	8	8	19	24.1	24.5	17



Y	OPERATION
20	Standard Type
O-ring can be changed to the other side, opposite direction application is possible.	



TECHNICAL DATA

Max. pressure: 350 bar

X=	Weight kg	Q MAX. l/min	TIGHTENING TORQUE Cartridge Nm
G02	0.015	15	6
G03	0.025	30	6
G04	0.040	50	10
G06	0.070	80	20

X	OPERATION
G02	G 1/4"
G03	G 3/8"
G04	G 1/2"
G06	G 3/4"

Z CRACKING PRESSURE

02	0.2 bar Only Supply X=G04, X=G06
05	0.5 bar
18	1.8 bar Only Supply X=G03, X=G04, X=G06
25	2.5 bar Only Supply X=G02